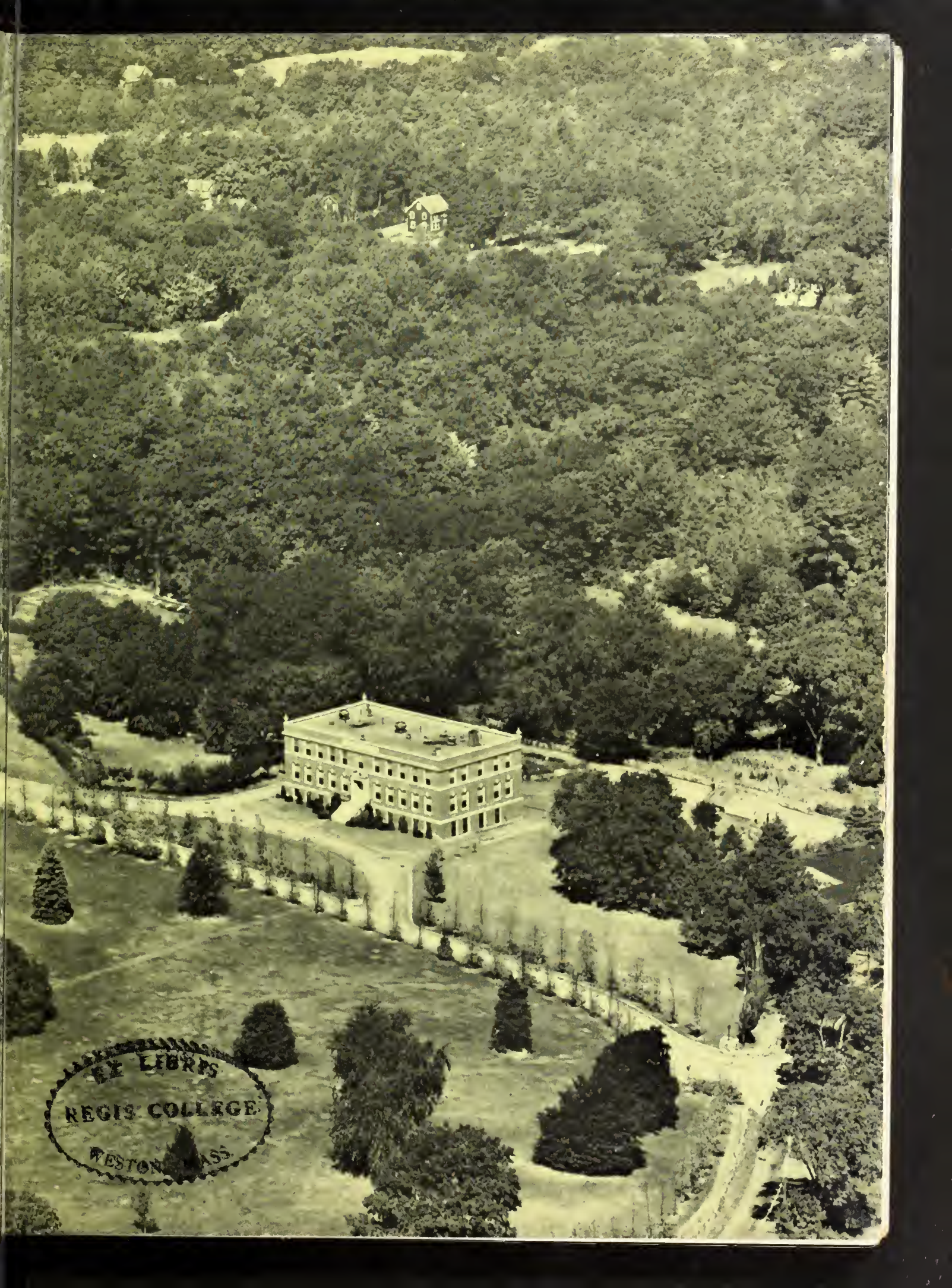




Mount Regis

1 9 5 3





EX LIBRIS
REGIS COLLEGE
WESTON MASS

1871
1872
1873



THE
MOUNT
REGIS
1953



Edited by SENIOR JOURNALISTS
Joan M. Cannon, Editor



Published for

REGIS COLLEGE

WESTON

MASSACHUSETTS

50,745-

N
378.744
N 33 R
1953



Foreword

Here at the College of the King we have laughed and worked and prayed together.

That the cherished memories of our times together may never fade or die, we have tried to recapture in these pages of *THE MOUNT REGIS* the spirit of life at Regis.

As you turn the pages, you will live our four years on the campus once again.

The bewilderment of Freshman days, the frivolity of the Sophomore Banquet, the elegance of Junior Week and the solemnity of Commencement are all tucked in our hearts with tenderness, to be recalled with warmth and love.

This is the story of the years in which we developed socially, intellectually and spiritually.

We have been equipped so that we can leave the walls of our Alma Mater with confidence in our ability to face the world of today and take an active part in its life.

Although we shall go out into different fields, some to the teaching profession, others to the business world, still others to enter upon marriage or the religious life, we will have one thing in common, the memory of our four years together.

This is the story of the years in which we have learned the Way, the Truth and the Life. Now we can go forth prepared to face the future without fear and to walk His way through life.



Contents

	PAGE
Foreword	5
Dedication	8-9
Campus Views	10-17
Administration	18-21
Faculty	22-31
Seniors	32-101
Senior Informals	103-107
Underclasses	108-127
Activities	128-143
Features	144-159
Commencement	160-164
Epilogue	165
Last Section	166-198
Index	199-200





In Dedication





Across the looking glass of history, the stream of the learned has etched its course through courts of nobility. Surrounding themselves with men of intellect, the Kings of the ages have diffused the wisdom of the past and guided the fortunes of the future.

So it follows even to the present. The modern court of the College of the King offers the learning of her Faculty and the guidance of her Administration to us, her subjects for four years, that we may be truly wise.

With the deepest appreciation for the ideals and understanding we have received from those educators who have shown us the Way, the Truth and the Life, we dedicate this 1953 MOUNT REGIS to the Faculty and Administration.

May their lives be blessed with special graces, for they have given of themselves in order that the lamp of knowledge may be held in steady hands by college women, who look to the future with peace and certainty.



The main entrance to Regis Hall, cradle of the college, which faces a delightfully wooded campus of 168 acres, gives groups of Seniors an ideal spot for a chat after a day of lectures and classes.



Our Lady Grotto, below the Norman Tower, is surrounded by landscaped gardens, providing a rendezvous for prayer and rest, remote from the distractions of bells and college routine.





Earthly throne of Almighty God, the veiled tabernacle within the cloister of St. Joseph Hall, Holy Family Chapel, is a daily scene of vigils of prayer by the Sisters of St. Joseph, faculty members.





Jeanne O'Sullivan, talented Class President, entertains a jovial group. Regina Boyle, Laurie Christie, Judy Perault, Claire O'Connell and Mary Byrne seem ready with a rousing collegiate ditty.





Rhododendrons monopolize the attention of Betty, Barbara and Lennie, as they relax.



Taking advantage of an elective in Typing, groups of Seniors stroll to afternoon classes in the Business Building.



With Regis Hall and part of the campus in the background, Marjorie Wood, Kay Birmingham and Kay Higgins sit on the Parterre and recall college joys and tribulations.





Cardinal O'Connell Hall, scene of lectures and laboratories in the sciences, is enveloped by a snowy blanket, outlined by richly black trees and topped by smooth fluffs of clouds in an ice blue sky.



College Hall, main building of Regis campus life, stands a silhouette against the stark white of nature's handiwork, sheltering students at work and play from the cold winds, high on the hilltop.

ADMINISTRATION







"Ut Cognoscant Te," motto of His Excellency, Archbishop Richard J. Cushing, blazes forth the Way, the Truth and the Life for Regisites to follow into eternity.

Executive Officers

MOST REVEREND RICHARD J. CUSHING, D.D.
Archbishop of Boston
President Ex-Officio

REVEREND MOTHER MARY EUPHRASIA
SISTER GENEVIEVE MARIE
SISTER MARY JOSEPHINE
SISTER MARY HONORA
SISTER MARY THEONILLA

ADVISORY BOARD

RT. REV. AUGUSTINE F. HICKEY, V.G.	RT. REV. HUGH F. BLUNT, LL.D.
RT. REV. RICHARD J. QUINLAN, S.T.L.	RT. REV. ROBERT H. LORD, Ph.D.
ROY J. DEFERRARI, Ph.D.	FREDERICK W. MANSFIELD, LL.D.
JOSEPH STANTON, M.D.	WALTER E. CARR
WILLIAM E. MACKEY	MRS. PATRICK T. HURLEY

MRS. JAMES DENNING

OFFICERS OF ADMINISTRATION

SISTER MARY ALICE, A.M.
President

SISTER MARY LUCILLA, Ph.D.
Dean

SISTER MARY MILDRED, Ph.D.
Registrar

SISTER MARYNIA, A.M., M.S.S.W.
Dean of Students

SISTER MARY MACRINA, A.B., B.S.
Treasurer

SISTER MARY ST. FRANCIS, Ph.D.
Professor of French

SISTER M. JOAN PATRICIA, A.M.
Librarian

REVEREND EDWARD T. HARRINGTON, A.M.
Chaplain

Faculty of Regis College . . .

SISTER MARY ALICE, A.M.
President

SISTER MARY LUCILLA, Ph.D.
Dean

SISTER MARY MILDRED, Ph.D.
History

RIGHT REVEREND
AUGUSTINE F. HICKEY, V.G.
Theology

SISTER M. ANNA LAWRENCE, Ph.D.
Biology

SISTER M. JOAN PATRICIA, A.M.
Library Science

SISTER MARY EMILY, Ph.D.
Chemistry

RIGHT REVEREND
ROBERT H. LORD, Ph.D.
History

REVEREND OTIS F. KELLY, M.D.
Psychology

SISTER M. ELIZABETH FRANCES, Ph.D.
Sociology

SISTER AGNES MARIE, M.S.
Home Economics

SISTER MARY ATHANASIA, Ed.M.
Business

SISTER MARY BERNARDA, A.M.
Physics

SISTER M. ST. FRANCIS, Ph.D.
French

SISTER MARY LEONARDA, Ph.D.
Mathematics

SISTER MARY CARLOTTA, Ed.M.
Home Economics

GRACE A. HAWLEY, A.M.
English

SISTER MYRA, Mus.M.
Music

SISTER MARIE, R.N., Ed.M.
Health



Jean Meegan and Felice Spugnardo examine slides in the Physiology Laboratory.

Faculty Points out the Way . . .

SISTER MARY REGINA, A.M.
English

SISTER ANNA MIRIAM, A.M.
Business

REVEREND E. T. HARRINGTON, A.M.
Philosophy

SISTER MARY PERPETUUS, Ed.M.
Spanish

SISTER MARY MACRINA, A.B., B.S.
Treasurer

SISTER MARY MARGARITA, A.M.
Education

SISTER MARY CLAIRE, Ph.D.
Chemistry

SISTER MARY REGINALD, Ph.D.
Theology

SISTER MARY ALEXINE, Ph.D.
Economics

REVEREND D. T. MCCOLGAN, Ph.D.
Sociology

EVELYN M. COYLE, Ed.M.
Business

SISTER MARY JOHN, Ph.D.
English

SISTER MARYNIA, A.M., M.S.S.W.
Sociology

SISTER MARY TARCISIUS, A.M.
Theology

SISTER MARY LOUISELLA, A.B.
Art

SISTER MARY IRMINA, A.M.
English

SISTER MARY ALPHONSINE, Ph.D.
History

SISTER MARY XAVERIA, Ph.D.
Latin

MME. ALINE P. LAUS, A.M.
French



Ann Kent and Gail McGrath study the electrically driven planetarium.

Faculty Shows the Truth . . .



Pennie serves a quick cup of coffee to Sandy, Doris and Barbara, between classes.

REVEREND G. F. SULLIVAN, A.B.
Psychology

SISTER MARY BERNADETTE, M.S.
Home Economics

SISTER MARY FLAVIA, M.S.
Home Economics

SISTER MARY GARNIER, M.C.S.
Business

MARY C. BRYAN, A.M.
English

JOSEPHINE E. DESIMONE, A.M.
Spanish, Italian

JULIA M. BARNABO, A.M.
Biology

SISTER MARY FRANCIS, A.M.
Latin, Greek

SISTER MARY JUSTINE, A.M.
Mathematics

SISTER MELMARIE, A.M.
English

SISTER MARY ERNESTA, A.M.
Speech, Drama

ELIZABETH G. MURPHY, Ed.M.
Director of Appointment Bureau

MARY P. HAMILTON, A.M.
German

OLIVE NOLAN, Ed.M.
Physical Education

EDWINA HUGHES, B.S.
Physical Education

SISTER M. FRANCES JAMES, A.B.
Library Assistant

SISTER M. FORTUNATA, M.S.
Library Assistant

REVEREND ANATOLE BAILLARGEON,
O.M.I., A.M.
Theology

Faculty Lives the Life . . .

SISTER MARY JULIE, A.M.

Theology

SISTER MARY CONSUELO, A. B.

Library Assistant

SISTER MARY ELLENICE, Ed.M.

Business

SISTER MARY JOSEPHUS, A.M.

History

SISTER MARYSIA, M.S.

Biology

SISTER MARY RICARDA, M.S. in L.S.

Library Science

MARY T. DELAHANTY, Ph.D.

Economics, Government

MAUREEN P. FITZGERALD, A.M.

Psychology

TERESA FLAHERTY, Ed.M.

Education

ALICE MAGINNIS, A.M.

Art

SISTER MARY NEONILLA, M.S.W.

Sociology

NANCY MOHAN, M.S.

Biology



Terry Audette and Fleurette Arpin show pleasure from a full P.O. box.

HELEN HUSTED, Ph.D.

Chemistry

MARY H. WALSH, A. B.

Chemistry

KATHERINE A. MULLIN, A.B.

Home Economics

FRANCES M. KINSELLAR, A.M.

Psychology

ROBERT LIST

Advertising

Faculty of Regis College



RT. REV. A. HICKEY, V.G.
Theology
St. Paul Rectory, Cambridge



ROBERT LIST
Retailing
68 Lincoln Road, Wellesley Hills



REV. A. BAILLARGEON, O.M.I.
Theology
Oblate Seminary, South Natick



REV. E. HARRINGTON, A.M.
Philosophy
Regis College, Weston

Faculty of Regis College



REV. GEORGE F. SULLIVAN, A.B.
Psychology
Sacred Heart Rectory, Newton Centre



REV. OTIS F. KELLY, M.D.
Psychology
St. Zepherin Rectory, Cochranton



RT. REV. ROBERT H. LORD, Ph.D.
History
St. Paul Rectory, Wellesley



REV. D. T. MCCOLGAN, Ph.D.
Social Service
St. John Seminary, Brighton

Faculty Informals



Miss DeSimone takes time out to help Judith Gioiosa and Arlene Drown, who inquire about Italian and Spanish Literature for their Seminar study.



Madame Laus stops in the corridor to greet Mary Louise Carr and Arlene Drown.



Faculty Informals



Bette Lou Mullins and Helen Sullivan enjoy listening to Miss Hamilton, Professor of German, recount her Summer in Europe and her trip to Germany.



Intricacies of business techniques are discussed by Sheila Post and Miss Coyle.





Faculty Informals



Biology and its complexities are explained by Miss Barnabo to Kate Barker.



On the Parterre, Founders' Day, Miss Hawley and Miss Bryan offer congratulations to Leslie Heath, Patricia McNiff and Mary Lynch, newly-gowned Seniors.

Faculty Informals



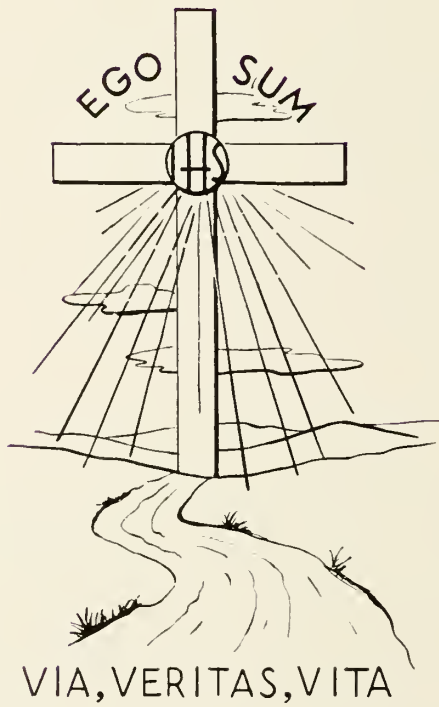
After formal investiture, Laurie Christie asks Miss Hughes' aid with the orchid. Audrey Kendrick and Claire O'Connell accept the good wishes of Dr. Delahanty.

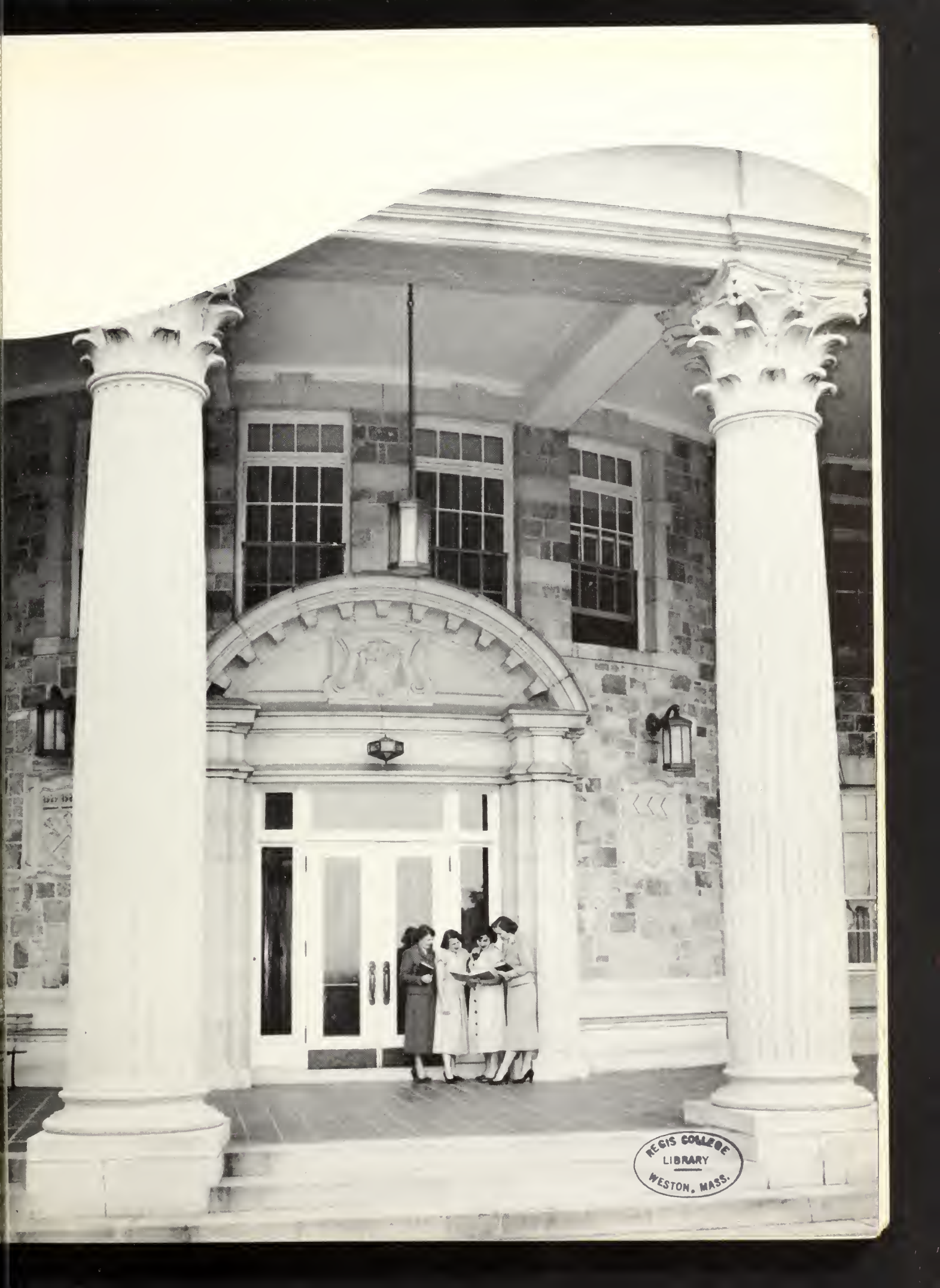


Bermuda trip interests Miss Nolan, Dorothy Fraser and Bette Lou Mullins.



SENIORS





REGIS COLLEGE
LIBRARY
WESTON, MASS.

Regis College Is Gateway to Way, Truth, Life.



MARY LOU AHEARN, A.B.

61 North Street

Somerville

Better known around school as Speed, Mary Lou has a facility for witticisms and an ability to speak on almost any topic that is brought up. For leisure time, she is fond of bridge and detective stories. Especially enjoyable is a cup of coffee on the trip to Regis. However, chit-chat at this early hour is distasteful. Her ambition is to secure work in a foreign country, preferably of a governmental type with its intriguing facets.

Sodality. Vice-President 2. Press Club.

ANN MARY ARCIFA, A.B.

268 Park Street

Lawrence

Meet the A of the ABC's of 419. Personality plus, Ann keeps the Boat rocking with laughter at her blasé comments on life in general. A Soc concentrator, who really puts theory into practice, Artichoke gathers in friends and gives out open-handed helpfulness. Some call her Ann; some call her Anna; but all call her one of life's gems, holding out sparkles of happiness.

Sodality. Erhelon Club. I.R.C. 2, 3, 4. Dramatic Club 2, 3. Art Club 4. C.A. 2, 3, 4. A.A. 1.



Regis College Is Gateway to Way, Truth, Life.

FLEURETTE T. ARPIN, A.B.

925 Atwells Avenue Providence, R. I.

Through the haze of a Ford convertible's exhaust may be seen one of the Ertes. Fleurette, many-sided member of the Boat's crew, breezes through French verbs, sewing spasms and soprano Glee Club arrangements with startling ease. A bubbling sense of humor and deep-reaching thoughtfulness characterize Fleurette, distributor of the spice of life with an international flavor.

Sodality. Language Club; Pres. 4; Vice-Pres. 3. Glee Club; Treas. 4. I.R.C. 1, 2. Art Club 4. A.A. 1.



THERESA M. AUDETTE, A.B.

535 Benefit Street Pawtucket, R. I.

"Murder," someone yells in 426 and District Attorney Terry steps in to solve the case. A tiny tot, with a remarkable travel backlog, Mighty Mite possesses a mind attuned to political events and an inimitable personality, which enables her to turn history into reality. Shuffleboard and future research work combine to make a versatile must on everyone's list of friends.

Sodality. Leo XIII Club; Pres. 4. I.R.C.; Treas. 3; Vice-Pres. 4. Dramatic Club 3. Art Club 4. A.A. 1.





KATE J. BARKER, A.B.

115 Fair Oaks Park

Needham

"Oooh. That long trek from the Science Building." But it's worth it to Kate, who proudly displays her biological specimens to her colleagues. Knitting, swimming and recalling her memorable Bermuda trip are her keenest delights. Beware, pokey drivers, for you are Kate's biggest trial in life. Calm efficiency and quiet friendliness will unite to make Kate's future as a Laboratory Technician a successful one.

Sodality. L.P.C. A.A. 2, 3, 4.



ELEANOR M. BARRETT, A.B.

20 Brookside Park

Milton

Day-hop historian from Milton, Ellye is one of the hottest debaters in any political discussion. As non-resident Prefect of Sodality, she is a member of the red and gold tassel group, with the added distinction of being a chief detective, for Ellye solved the mystery of Sally Gee. Sense of humor and easy charm are a hard-to-beat combination, totaling personality plus.

Sodality; Prefect. Government 4. Leo XIII Club. I.R.C. 4. A.A. 1, 2, 3.



Religion and Culture Form Citizens of Tomorrow.



PATRICIA M. BENWAY, A.B.

529 Parker Street

Newton Centre

Patty professes a special aversion for 3.30 classes, Saturday classes and bells. However, she enjoys her major, Sociology, and hopes to do Soc Work after Commencement. The family summer home on Popponneset Island, Cape Cod, provides a rendezvous for vacation months. Here she indulges in sailing and tennis. A year-round sports enthusiast, she advocates skiing in Winter and revels in flying down the slopes.

Sodality. Ethelon Club. Dramatic Club 2, 3. I.R.C. 2. A.A. 1, 2, 4.

KATHLEEN M. BIRMINGHAM, A.B.

709 Cambridge Street

Brighton

Devoted English major commuting from Brighton, Kay is the original "doll-type" girl. Advocate of education for little ones, she should be an excellent first grade teacher. In preparation for this, she will give anyone a course in "Etiquette and the Young Child." Bitter memories are mixed with the fond, when Kay has thoughts of baseball, hockey, Glee Club and M.I.T.

Sodality; Vice-Prefect 3, 4. Press Club. Glee Club; Publicity 4. Dramatic Club.



Religion and Culture Form Citizens of Tomorrow.

Regis College Is Gateway to Way, Truth, Life.



CATHERINE M. BONANNO, A.B.

3 Albion Street

Methuen

Comes the B of the ABC's of 419. Kay, a small parcel full of large biological terms, delights in discussions, dancing and dissecting. A well-developed sense of humor contrasts with moments of seriousness in this diminutive Methuenite. A future Research Assistant, Kay dabbles also in golf, pounds piano keys and specializes in an open-house friendliness to party-goers.

Sodality. L.P.C. I.R.C. 2, 4. Dramatic Club 2, 3. Art Club 4. A.A. 1.

JANET G. BOYD, A.B.

5 Croton Street

Wellesley Hills

Poised sophisticate of the Home Economics Department, Janet indulges her love of Literature by electing English courses. In conjunction with this, she spends free hours reading. With such a background, she is well able to discuss and debate intelligently on several topics, an activity most agreeable to her. To do Retail Work is one of her prime objectives.

Sodality. Alpha Omicron Tau. Dramatic Club. Phi Upsilon Omicron; Treas. 4.



Regis College Is Gateway to Way, Truth, Life.

REGINA M. BOYLE, A.B.

116 Brooks Street

Brighton

A tiny package with big ideas, Regina plans to follow her Soc major as a Naval Officer, after Degree Day. Fond thoughts include her Summer at Bainbridge, with the ROCs, for which she is an ardent advocate and good salesman. Spare hours find her knitting and skating, while much time is consumed in Welfare Work. Interested in people, earnest in work, calm and tranquil, Regina will succeed in navy and white.

Sodality; Treas. 4. Ethelon Club. I.R.C. 4.



EDWINA BURNS, A.B.

3 Hilltop Road

Chestnut Hill

"Ed, telephone call," is a frequently heard line on the fourth floor. An emphatic French major, Ed has been a constant Dean's Lister since Freshman days. Golf, tennis and swimming are her top sports. Trips to Bermuda and North Carolina supply Ed with fond memories, while dreams of a Summer in Europe fill her imagination.

Sodality. Language Club; Publicity 2; Treas. 4. Glee Club; Vice-Pres. 4. Schola Cantorum. Mission Unit 4. I.R.C. 2. Dramatic Club 2. A.A. 2.





MARY F. BYRNE, A.B.

123 Bennett Street Brighton

Unhurried is the word most descriptive of Francie's journey through college. A student all the way, she is one of the Sociology Department's most conscientious members. She thoroughly enjoys dancing, at which she is adept. Her specialty is anything Irish. Irish probably most closely expresses the essence of Francie, for her sweetness and charm are inborn traits.

Sodality. Government 2, 4. Vice-President 4. Secretary 1. Ethelon Club. A.A. 1.



MARY A. CAHILL, A.B.

100 Fairfield Road Cochituate

Hailing from nearby Cochituate, this enthusiastic Business concentrator is aiming for a career in the Government, after June. Constantly ready and willing, devoted colleague, Regis' songstress, Mary makes the best of company. Skating and swimming and, of course, music are her favorite avocations. Travel to Europe and out West is on her list of trips in the future. Good natured, amiable Mary, as sweet as her name.

Sodality. Business Club. Glee Club. A.A. 2, 3, 4.



Religion and Culture Form Citizens of Tomorrow.



JOAN T. CALLAHAN, A.B.

56 Carver Road

Watertown

A ready smile, a good word for everyone, a true colleen — that's Joan. Skilled in Accounting, the ins and outs of its problems constantly intrigue her. Interested in people, eager for adventure, she picks up new ideas with bursts of enthusiasm. Sports of all kinds hold her keen interest, while a good movie is her preferred pastime. A career in Accounting is her hope for future days, plus a California sojourn with Regisites.

Sodality. Business Club. I.R.C. 4. A.A. 2, 3, 4.

ANN M. CAMPBELL, A.B.

41 Westford Street

Chelmsford

Nancy personifies the typical college girl. A Business major, she spends her spare time sewing, knitting and attending football games, particularly at Harvard. Getting up in the morning and writing letters are unwelcome activities in her life. Fond of athletics, her favorites are swimming, skating, sailing and horseback riding. After obtaining her degree, Nancy hopes to do Secretarial Work and to travel.

Sodality. Treasurer 3. Business Club. I.R.C.



Religion and Culture Form Citizens of Tomorrow.

Regis College Is Gateway to Way, Truth, Life.



JOAN M. CANNON, A.B.

69 Grand Street

Leominster

"Never!" draws through the fourth floor corridor and on its end trails Joan, with her ever-present smile. This Bermuda traveler, with plans of Ireland touring, offers an intriguing personality, resulting in a long list of friends. Joan, sparkling idealist, refreshing conversationalist, is enthusiasm personified.

Sodality; Vice-Prefect 4. Press Club; Treas. 3. Dramatic Club; Publicity 2. N.F.C.C.S.; Publicity 2. *Regis Herald. Hemetera.* Mr. REGIS; Editor. A.A. 1, 2.

JOAN M. CARROLL, A.B.

51 Harnden Avenue

Watertown

A conscientious English student with Journalism as allied field, Joan plans to teach high school after Degree Day. Like many Regisites, her future aspirations include travel. Joan's pastimes are knitting, skating, swimming and watching Ed Sullivan. Trips to Canada, New York and Washington spotlight her memories. Never too tired, never too busy to help others.

Sodality. Press Club. I.R.C. 2, 3, 4. A.A. Mr. REGIS. *Hemetera. Regis Herald.*



Regis College Is Gateway to Way, Truth, Life.

MARCELLINE A. CASSEN, A.B.

West Yarmouth

Now the C of the ABC's of 419. The swirl of ballerina skirts, the delicate strokes of a paint brush, the grace of acrobatic dancing create lasting impressions of Marcy's talents. Home Economist with a starry-eyed future in Designing, Marcy unites artistic and athletic temperaments to reveal a versatile and fascinating person.

Sodality. Alpha Omicron Tau. Kappa Omicron Phi 3; Editor 4. Phi Upsilon Omicron 3, 4. Art Club; Sec. 3; Pres. 4. I.R.C. 4. A.A. 1, 2.



KATHRYN M. CAULEY, A.B.

8 Carruth Street

Dorchester

Kathie, a typical Home Ec follower, always looks chic. She still talks enthusiastically about her trips to California, Europe, Canada and Florida. Several '53ers will recall her wonderful parties after the Regis dances. Kathie spends her spare moments knitting, swimming and skiing. A persistent fan of B.C. and of the Navy Blue, Kathie's aspirations tend to teaching and marriage.

Sodality. Alpha Omicron Tau. Glee Club. Dramatic Club 1, 2, 4. A.A. 1, 2, 4.





RITA F. CHAMBERLAND, A.B.

14 Page Street

Brunswick, Me.

All the way from Brunswick, Rita's friendly and cooperative spirit won her a permanent spot in Regis. Kept busy with the intricacies of Accounting, she still finds hours for active support of the Glee Club and Choir. Her memorable week ends are spent at home, especially at Bowdoin. Aspirations for her C.P.A. and a career in Accounting are Rita's dreams for the future.

Sodality. Business Club. Glee Club 2, 3, 4. I.R.C. 2, 3, 4. Dramatic Club 3. Schola Cantorum 3, 4.



LAURIE M. CHRISTIE, A.B.

70 Moraine Street

Jamaica Plain

The one-woman backbone of our fabulous Junior Week, Laurie labored long and hard to make the events of last May memorable for all. During Senior year as Student Government Representative, she continued to prove her competency as leader. A spark of excitement shines in her eyes when she is asked about her Florida trip. Fun-loving Laurie has done much for the '53ers.

Sodality. Government 4. Ethelon Club. Dramatic Club 3. A.A. 2, 3, 4.

Religion and Culture Form Citizens of Tomorrow.



JOAN C. CLARK, A.B.

100 Pacific Street Rockland

A resident for three years, Joan joined the day hoppers, Senior year. Frequently, she can be overheard proudly extolling the merits of her two younger brothers. Painting is her preferred avocation and her home contains evidence that she has achieved considerable success along this line. Joan remains quiet and reserved most of the time, but usually springs into action as soon as the Charleston is played.

Sodality. Business Club. A.A. 1.

JEANNE M. CLIFFORD, A.B.

49 Lovell Road Watertown

Petite, pert and loads of fun — that's Jeanne. Expert Clothing major, she holds an added flair for Art. To friends, the perfect hostess; to everyone, a friend. Summers at Falmouth are popular, while California is her choice for travel. As if one of Jeanne is not enough, she comes in twos, with her twin holding her attention.

Sodality. Alpha Omicron Tau. Kappa Omicron Phi; Guard 3; Keeper of Archives 4. Mass. Home Economics Assoc.; Sec. 3, 4. Dramatic Club 1.



Religion and Culture Form Citizens of Tomorrow.

Regis College Is Gateway to Way, Truth, Life.



VIRGINIA M. CLIFFORD, A.B.

42 Robertson Street

Quincy

Effervescent Ginnie. Proud possessor of a jet black Chev and ardent admirer of Boston Terriers, her cheerfulness and vivaciousness make her everybody's friend. Treks to the Business Building, feasting on cheeseburgers and hunting down ads for *The Herald* fill Ginnie's busy days. Nothing surpasses a New York week end for Ginnie and Bermuda plans complete her dreams.

Sodality. Business Club. I.R.C. Glee Club 3, 4. Dramatic Club 3, 4. *Regis Herald*; Bus. Mgr. 4. A.A. 3.

LUCIANN COLLETTA, A.B.

44 Pearl Street

Quincy

Frequently the target of several jokes from her classmates, Lucy wins by a landslide as a good sport. Most often on the listening end of any conversation, she manages now and then to interject her comments, which send others into gales of laughter. Her popularity was evidenced by the concern of friends, when she underwent an operation, this year. Boston College finds a loyal rooter in Lucy.

Sodality. Business Club. Dramatic Club 1. I.R.C. 2.



Regis College Is Gateway to Way, Truth, Life

JANET T. CONNOLLY, A.B.

19 Mill Street

Natick

Janet, essence of carefreeness, is a well-known day hop from Natick. Bubbling with energy, she is a devotee of the Physical Ed Department. Later years hold high hopes of eventually reaching the wilds of Alaska. Her reputation as golfer and party-giver has been long and well established. Her future plan? A typical Janet reply, "A nice job in a nice place."

Sodality. Vice-President 1. Mathematical Club; Vice-Pres. 4. Mission Unit. A.A.; Sec. 2; Vice-Pres. 4.



SHIRLEY M. CONNORS, A.B.

48 Winthrop Avenue

Reading

First lady Junior year, gracious Chairman of a wonderful Sophomore Banquet, capable Editor of *Hemetera* catalogue a few of Shirl's unlimited talents. Squeezed in among these are miniature golf, building floats and playing tennis. Delighting in letter writing to the Navy and taking long walks, she dreams of work in Hawaii. Eager to help and unselfish is Shirl.

Sodality. Government 3. President 3. Press Club. I.R.C. 2, 4. *Regis Herald. Hemetera*; Editor. MT. REGIS.





M. LORRAINE COWAN, A.B.

116 North Mulberry Street Statesville, N. C.

The Senior Class's Southern belle and a fervent Southern citizen, Lorraine is willing to tell of North Carolina, her home state. Although she is an earnest French concentrator, Lorraine has found time to make the Week-End Club a success. Inseparable roommates for four years, Lorraine and Emily are ever eager to join in the fun, on and off campus.

Sodality. Language Club. Dramatic Club 2, 3, 4. I.R.C. 3. Week-End Club 2, 3; Chairman 4. Mission Unit 4. C.A. 1. A.A. 2, 3, 4.



MAUREEN E. CREMEN, A.B.

9 Oakdale Street Brockton

Mo, the whizz at figures, hails from the one and only Marciano city. Mo is particularly adept at golf, putting her non-athletic roommates to shame. She remembers especially a certain stag dance, Sophomore year, when she displayed her Charleston ability to all present. She has a strong aversion to girls who brag. Sincerity, the foundation to all aspiration, will surely guide this faithful Brocktonite to success.

Sodality. Business Club. Mission Unit 4.

Religion and Culture Form Citizens of Tomorrow.



DOROTHY C. CULPIN, A.B.

13 Revere Street

Jamaica Plain

Unruffled charm identifies her trade-mark. Dotty alternates between Math books and tangos. Flair for blue, dancing and foreign post cards keep life exciting. She looks back on her mid-semester trips to New York and the Yale Science Convention. Mathematical Engineering appears in her future aspirations. Quiet friend to all, Dotty is the quintessence of placid dignity.

Sodality. Mathematical Club; Publicity 4. Dramatic Club 2. A.A. 1, 2.



BARBARA A. DALTON, A.B.

8 Bogandale Road

West Roxbury

Sparkling with life and laughter, fun-loving Barb is ever eager for a good time, yet still a star in class. Foods major, with a specialty in Dietetics, she is aiming for A.D.A. Senior Secretary of Phi Upsilon Omicron, a strong penchant for sewing, her interests include B.U., ice skating, bowling and tobogganing. Hospital work and travel fill her dreams of tomorrow.

Sodality. Alpha Omicron Tau. Phi Upsilon Omicron; Sec. 4. A.A. 1, 4.



Religion and Culture Form Citizens of Tomorrow.

Regis College Is Gateway to Way, Truth, Life.



CLARE E. DELANEY, A.B.

32 Fidelis Way

Brighton

Always busy but never excited, Clare participated in several extracurricular activities, without letting her class work suffer. Soft-spoken and quiet at all times, one almost overlooks her tremendous capacity for accomplishing many things. Invariably, Clare presents a well-groomed appearance. She seems to be the perfect candidate for elementary school teacher.

Sodality; Sec. 4. Press Club. Mission Unit; Chairman 4. Sigma Tau Phi. S.D.S. 3; Vice-Pres. 4.

BARBARA A. DEMARCO, A.B.

31 Berkshire Road

Waltham

Lovely, laughable, sweetly naïve Barbara will always be thought of for her vivacious beauty. Those carpool trips with Janet and Jean, and dashes up the Regis hill with Anne are fond remembrances of her college years. "The Bio Labs are too far away" becomes a traditional battle cry. Breathless Barbara dreams of a career and eventually marriage. Success is inevitable for one of the hilltop's fairest daughters.

Sodality. L.P.C.; Treas. 4. A.A. 1, 2, 4.



Regis College Is Gateway to Way, Truth, Life.

ELIZABETH A. DEVLIN, A.B.

37 Bigelow Street

Brighton

Betty, with the twinkling eyes and infectious grin, is everyone's friend. Passion for dashing colors, tennis, photography keeps life free from monotony. Her staunch attempts at swimming bring hilarious recollections of Sophomore year. Travel-minded Betty has toured the West and plans more sojourns for the future. Graduation will find her equipped to enter into her anticipated work in the field of Sociology.

Sodality. Ethelon Club. Mission Unit 1, 4.



MARY E. DOHERTY, A.B.

51 Auburn Street

Haverhill

Behind the pounding piano keys, you will find Mary, Happy Hampton's staunch advocate, the other half of the Latinites of '53. Always receptive to everyone's problems, she looks out from behind an ever-present grin and finds life wonderful. Mary's future days lie in governmental work and her success comes from her ability to find the best in everybody.

Sodality. Sigma Tau Phi; Treas. 4; Treas. 2. C.A. 2, 3. I.R.C. 1, 2, 3.





JANET H. DOLLOFF, A.B.

32 Lovell Street

Nashua, N. H.

"Gregory" floats over the transom of the Big Four. Jan bursts out after it, breathless with the latest in collegiate circles. The mountains, P. Town, Felice's alarm clock, the vividness of "The Young and the Fair" and the laughter of one who loves life characterize Jan, an unforgettable snatch of song in the hearts of Regisites.

Sodality. Press Club; Pres. 4. Dramatic Club; Pres. 4. Glee Club. C.A. 2, 3. Mission Unit 2, 3, 4. Schola Cantorum. *Regis Herald*. Mt. REGIS.



MARGARET A. DONNELLY, A.B.

16 Smith Avenue

Lexington

Peggy from "down the road piece," day hopped from Lexington. Her blue Ford holds a memorable niche as standard equipment on the campus. Enthusiastic about travel, bridge, Scituate, anything green, this cheerful Senior brings happiness wherever she goes. Efficiency plus shows through in her election to Nu Beta presidency. Gracious, charming Peggy envisions her future work in the field of Psychology.

Sodality. Nu Beta; Pres. 4. Glee Club.

Religion and Culture Form Citizens of Tomorrow.

Regis College Is Gateway to Way, Truth, Life.



MARY R. DRISCOLL, A.B.

74 Harriet Street

Brighton

Mary, epitome of serenity, is the pleasant Regis embodiment of ambition and brains. An avid Math concentrator, she favors reading, the Cape, hours at the piano and anything blue. Happy recollections include the Science Convention at Yale and mid-semester trips to New York. Her future dreams, after receiving her sheepskin, focus upon a brilliant career, with research work in Mathematical Engineering.

Sodality. Mathematical Club. Dramatic Club 1.

BARBARA A. DUNBURY, A.B.

6 Wedge Pond Road

Winchester

Echoes of "the things we did last Summer..." and then appears Barb, engaged in her favorite pastime. Capable as she is casual, Barbara plans to use her Home Ec in teaching for the 4-H Club, after June. Her dreams include vacations in Mexico and in Europe. She fondly recollects summer waitressing, but abhors tardiness. Impulsive, energetic Barb is good company.

Sodality. Alpha Omicron Tau. Kappa Omicron Phi; Sec. 3, 4. Dramatic Club 1.



Regis College Is Gateway to Way, Truth, Life.

DORIS D. DUNCAN, A.B.

Mamba Point

Monrovia, Liberia

Do-Do came to Regis fortified with the serenity of Africa's culture. She gathered in Americanisms and now she leaves behind a bit of her smile, a wisp of her happiness in living. This triple D enthusiast for baseball games, Economics and letter writing has sprinkled her four-year's stay with large doses of subtle wit, humorous remarks and the friendships of all who knew her, especially the resident students.

Sodality. Lambda Tau Phi; Sec. 3; Pres. 4. I.R.C. 1, 4. A.A. 1, 3, 4.



MARY ANN FALVEY, A.B.

74 Adella Avenue

West Newton

A daily traveler from West Newton, Mary Ann has been a noteworthy student of *Deutsche*. Quiet attractiveness and an unassuming nature combine to form a strikingly pleasant picture. Knitting and bridge are two of her well-known star achievements. Always available to worry a pal through a test, give her a library card, offer a ride or console her love troubles, Huhn is exemplar number one of the friend in need.

Sodality. Ethelon Club.





SYLVIA M. FARINA, A.B.

17 Murphy Court

Newton

Ever see happiness come bouncing down the corridor? That's Syl and the grin probably means she's planning costumes for the next performance of her Girl Scout troupe. Possessor of the enviable ability to radiate sunshine, Sylvia has set sights for a teaching position in her major, English. For Syl, whose only complaint with life is commercials in movies, the future must hold out some of its choicest gifts.

Sodality. Press Club. Sigma Tau Phi, Vice-Pres. 3, 4.



MARY E. FARLEY, A.B.

147 Prospect Avenue

Brockton

"Anyone going for coffee?" a favorite expression, is often repeated by this energetic Business concentrator. A staunch supporter of Holy Cross, she hopes to be a private Secretary, preferably to a H. C. man. A member of the famed Andrews Sisters, Liz can always be depended upon to get the song fests started at 6 P.M. and to cooperate in all collegiate functions.

Sodality. Treasurer 4. Business Club. Dramatic Club 1. Mr. REGIS; Bus. 4. A.A. 1.

Religion and Culture Form Citizens of Tomorrow.



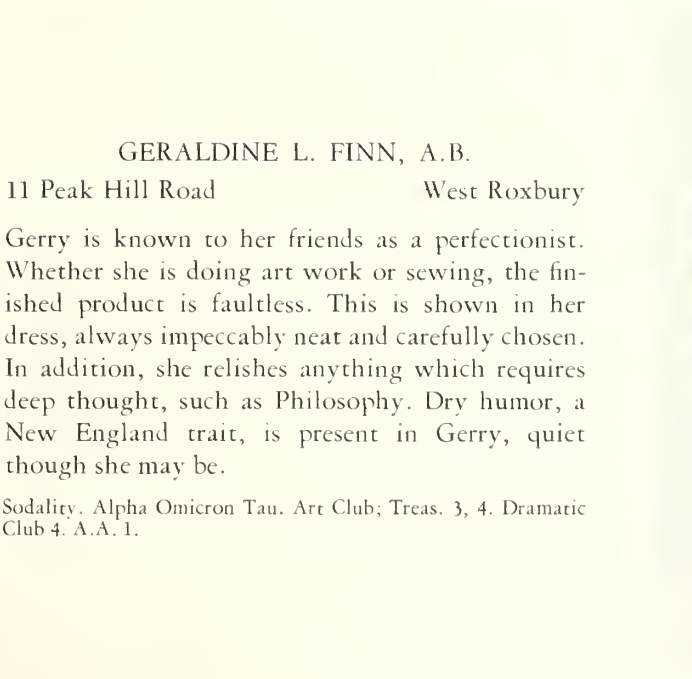
BARBARA E. FERGUSON, A.B.

634 Huron Avenue

Cambridge

Barbara professes a special fondness for books and shows signs of being very well-read. Subtle humor enlivens her repertoire of stories. Dramatics and Northeastern top her list of interests. She hopes to become a Speech Teacher after Graduation. Preparing for this, she taught Speech to the high schoolers at the Ursuline Academy, this year. Her constant companion is Regina Stack, with whom she worries over Seminar.

Sodality. Press Club. Dramatic Club.



GERALDINE L. FINN, A.B.

11 Peak Hill Road

West Roxbury

Gerry is known to her friends as a perfectionist. Whether she is doing art work or sewing, the finished product is faultless. This is shown in her dress, always impeccably neat and carefully chosen. In addition, she relishes anything which requires deep thought, such as Philosophy. Dry humor, a New England trait, is present in Gerry, quiet though she may be.

Sodality. Alpha Omicron Tau. Art Club; Treas. 3, 4. Dramatic Club 4. A.A. 1.

Religion and Culture Form Citizens of Tomorrow.

Regis College Is Gateway to Way, Truth, Life.



PATRICIA A. FLANAGAN, A.B.

3 Grantland Road Wellesley Hills

Red-headed bundle of energy commuting from Wellesley, Pat is a hardworking psychologist, staunch in her ideas and ideals. Active in Catholic Action, she was Editor-in-Chief of *Challenge*, newspaper, this year. Rumor has it that Pat will do graduate work at H.J.'s, or M.I.T. Among her favorites are records and driving, especially in one light blue Cadillac. Untiring intellect plus unchanging will equal Pat.

Sodality. Nu Beta. I.R.C. 1.

FRANCES B. FLORENCOURT, A.B.

15 Belton Street Arlington

Frannie, of unquestionable allegiance to Holy Cross, is a Psychology day hop from Arlington and one of the three pioneers in Elementary Education. Many are the memories for Frannie's Regis scrapbook. At the top are her unforgettable solos in the Holy Cross-Regis Concerts. Not far behind is a warm memory of a two o'clock return to campus, with a calla lily. Recollections include her debut in "The Young and the Fair."

Sodality. Nu Beta. Glee Club. Dramatic Club. I.R.C. 4. A.A. 1, 4.



Regis College Is Gateway to Way, Truth, Life.

ANN K. GAFFNEY, A.B.

117 Gardner Road

Nahant

Persevering commuter from quaint Nahant, Ann's daily treks have won for her the position of official Regis supporter of the B. & M. Railroad. General Home Ec major, she has the unique idea of owning, with Connie, a dress shop. Spring week ends at the Biltmore and ski trips to North Conway are foremost among her memories. Carefree and gay, Ann is never ruffled.

Sodality. Alpha Omicron Tau; Sec. 4. Art Club 2, 3; Vice-Pres. 4. A.A. 2, 3, 4. I.R.C.



BARBARA A. GALPIN, A.B.

182 Palmer Street

Arlington

Barb — even-tempered, sweetly sophisticated — is another member of the famous Arlington car pool. Fondness for dancing, swimming, anything blue and memories of those happy Hampton sands keep life exciting. Remember the mid-semester trips to New York and the Yale Science Convention? With college over, Barb aspires to travel in Western United States as a Mathematician.

Sodality. Mathematical Club; Pres. 4. Glee Club. I.R.C. 1. A.A. 1, 2.





MARILYN C. HALL, A.B.

90 Preston Drive

Cranston, R. I.

A staunch supporter of little Rhody and in particular Bonnet Shores, M hopes to go to graduate school and then to do psychiatric Social Work. Saturday classes, cowbells and hamburg rolls top her list of aversions. Swimming, tennis and reading are her preferences. Always casual and with an unperturbable nature, Comfort can be seen frequently chatting or strolling along the campus drives with Patty.

Sodality. Ethelon Club. Dramatic Club 3. I.R.C. 2.

JEANNINE C. HASTINGS, A.B.

62 Aldie Street

Allston

Jeannine, easy going with an infectious laugh, gaily passes through the days, collecting fond mementos. Home Ec student, she delights in the company of Cathy and Betty. Abhorring spinach, white bucks and gloomy people, she revels in accommodating friends with poems, for special occasions. Sewing is her preference, while teaching is her soon-to-be-realized ambition.

Sodality. Alpha Omicron Tau. Dramatic Club 1. Art Club 4. A.A. 4.



Religion and Culture Form Citizens of Tomorrow.

Regis College Is Gateway to Way, Truth, Life.



ELAINE T. HEALEY, A.B.

156 Sycamore Street

Somerville

Elaine, possessor of classical features, excels in both her major fields, English and Latin. A gifted artist, she spends much of her free time in drawing, along with her other pastimes, reading and swimming. Her beautiful earrings are ever a subject of fascination. Her pet dislike is egotists. Elaine hopes to teach after Commencement and sometime in the future to go to Europe for an extended trip and visit literary spots.

Sodality. Press Club. Sigma Tau Phi.

LESLIE J. HEATH, A.B.

67 Columbus Avenue

Somerville

This Soc major, sparkling with life and laughter, forms an important half of the Heath-Ahearn duo. Never a dull moment, not a care in the world. She recalls the carpool trips for coffee. Enthusiastic about sewing, dancing, B.C., Les shuns note taking in first hour classes. Pert, unassuming, lovable Leslie forms the perfect combination of wit and charm.

Sodality. Government 2, 4. Ethelon Club. Glee Club. Dramatic Club 1. A.A. 1.



Regis College Is Gateway to Way, Truth, Life.

KATHERINE F. HIGGINS, A.B.

247 Manning Street

Needham

Our dependable N.S.A. delegate, Kay traveled to Indiana, during the Summer of '52. Her most ardent admiration goes to the Red Sox, who get her wholehearted support, all the year round. During the national elections, Kay chairmanned the Regis Democratic Committee. Kay's genuine personality has won for her many friends during her college days.

Sodality. Leo XIII Society. I.R.C. 2, 4. A.A. 3, 4. N.S.A.; Delegate 3, 4.



JEANNE M. HOURIHAN, A.B.

19 Bonad Road

West Roxbury

Sweet and unassuming accurately portray petite Jeanne, bubbling with deep interest in everyone and everything, permeated with the happiness she finds in life. Summers in Scituate, ski trips to N.H., a future in teaching and traveling make this conscientious Business major of the twinkling eyes fun to know, enjoyable to be with, a cherished friend. These "still waters run deep" with sincerity and understanding.

Sodality. Business Club. A.A. 2, 3, 4. Mt. REGIS, Bus.





ELEANOR V. HUGHES, A.B.

842 Humphrey Street

Swampscott

A gurgling laugh, surprised blue eyes and a breathless manner characterize Ellie, possessor of rare and varied culinary talents. The winsome charm surrounding this future Dietitian stems from a personality rich with sincerity and a heart open to everyone. Never-to-be-forgotten Ellie of the golden hair and sunshine smile is the quintessence of the Regis ideal.

Sodality. Alpha Omicron Tau; Treas. 4. Kappa Omicron Phi. A.A. 1, 2.



MARY J. HYLAND, A.B.

71 Fairmount Street

Marlboro

A very adept Accounting major, Mary Joan and roommate Liz claim as their favorite pastime, going out for coffee. Mary Joan dislikes excessive noise and waiting for people. Holy Cross is tops on her list of men's colleges. Acutely conscious of fashion, her extensive wardrobe of beautiful clothes is envied by all. Her eyes aglow with mischief, Mary Joan goes gaily through life collecting fond recollections.

Sodality. Business Club. A.A. 3, 4.

Religion and Culture Form Citizens of Tomorrow.



DOROTHY H. JOHNSON, A.B.

750 Shawmut Avenue

Boston

Able juggler of test tubes, possessor of a keen analytical mind, Dotty abstracts enjoyment from life and spreads it among her friends. Her talented fingers are at home over titration solutions, piano keys or science-fiction books. Dotty's future success, not only in scientific fields but also in all she undertakes, may be judged by the ability she revealed at Regis.

Sodality. L.P.C.; Sec. 3; Editor 4. A.A. 1, 2. A.C.S. 3, 4; Student Affiliate.

VIRGINIA M. KANE, A.B.

45 Crocker Road

Medford

Gaiety, charm, Irish beauty in one lovely package, that's Ginny, Medford day hop. Delicious home cooked foods, her specialty; that typing class, her delight. "Let's go out for coffee" becomes a traditional cry, as Ginny and cohorts dash up from the Business Building. Close to her heart are B.C., a good time and a good book. Her future focuses on grade teaching.

Sodality. Business Club; Pres. 4. Glee Club 2, 3, 4. Dramatic Club 1, 2. A.A. 1, 2.



Religion and Culture Form Citizens of Tomorrow.

Regis College Is Gateway to Way, Truth, Life.



ANNE M. KEEFE, A.B.

33 Thompson Avenue Hingham

Biology, her major field, engrosses Anne's life and she hopes to follow Cancer Research very soon. A trip to Bermuda, during Easter vacation last year, with Kate highlights her social memories. A visit to Europe is included in her future projects. Swimming is her preference when it comes to sports, but she has a strong antipathy towards selfishness. Fordham University rates a special niche in her heart.

Sodality. L.P.C.

BARBARA O. KEENAN, A.B.

1 Main Street Falmouth

Knitting snarled up? Bring it to Barb and this needle necromancer will unravel knots in your argyles and snags in your disposition. A hearty, happy laugh frequently pushes its way through the halls, announcing that Barb is in the vicinity, busy chasing away someone's blues. Math may be her major, but making others as gay as she is seems to be the real concentration of light-hearted, big-hearted Barb.

Sodality. Mathematical Club; Treas. 4.



Regis College Is Gateway to Way, Truth, Life.

AUDREY M. KENDRICK, A.B.

37 Hillsview Road

Milton

In between writing letters to H.C., Audrey can always be found down in the Home Ec Lab or Periodical Room, busy at work. After many vain attempts at knitting and feuding for four years against open doors, these two things have become her foremost dislikes. "Such are the vicissitudes of life" is her pet saying, although they never seem to ruffle her or disturb that characteristic placidity, her forte.

Sodality. Alpha Omicron Tau. Dramatic Club 2, 3. A.A. 1, 2, 3.



MARY-LOUISE KENNEY, A.B.

45 Holmes Street

Brockton

Lilting notes of "La Vie en Rose" mingle with a deep-throated chuckle, as Paris' gaiety reflects in Louise's many-faceted personality. This Brockton Rocky-ite finds swimming pools her natural environment, French her natural talent and making friends her natural aptitude. A slow drawl and vivaciousness spotlight Louise, dispenser of ingredients for making others happy.

Sodality. Language Club. Dramatic Club 2. Sigma Tau Phi 2; Treas. 3; Vice-Pres. 4.





MARY L. KILFOYLE, A.B.

13 Messervey Street

Salem

Staunch advocate of Summers at Nahant, Mare displayed her vocal talents as member of the famed Wright, Torrisi and Kilfoyle trio. A perfect Seminar companion endowed with a keen sense of humor, Mary claims Library Science as her favorite class. A visit to Denver, during the Summer of Junior year, gave Westerners a special spot in her heart. A truly good sport, Mary manages to bring the bright side of life to any group.

Sodality. Press Club. I.R.C. 4. A.A. 1.



RITA M. KIRBY, A.B.

58 Newell Road

Auburndale

Warm smile, quiet friendliness characterize Rita, classicist of '53. A four-year Caf worker, Reet as short order cook, is a familiar figure to all Cafites. Flaming colors and long walks in the rain keep Rita happy, while hats are her biggest cross. Graduation will find her making plans for American trips, with her usual spontaneity and zest for living.

Sodality. Sigma Tau Phi; Sec. 2; Pres. 3. I.R.C. A.A. 1, 2, 3. C.A. 3, 4.

Religion and Culture Form Citizens of Tomorrow.



ELIZABETH C. KNOWLTON, A.B.

210 Maple Street

New Haven, Conn.

A gay heart-breaker, Betty of the many beaux combines efficiency and enthusiasm to produce a sunny and likable disposition. Her distinctive standing as the only Spanish major of '53 indicates a translation position for this member of the Wing's Big Four. Blonde-bobbed Betty holds the key to success in her winning smile, her thoughtfulness and her ability to make others as happy as she always is, day and night.

Sodality. Language Club.



EILEEN M. KOSTER, A.B.

104-25 191st Street

Hollis, N. Y.

Competent, calm and capable, three pithys that one always associates with Eil, thoughtful Long Islander, whose heart is as big as forever. A habit of being there when needed, a knack with knitting needles and a realistic viewpoint splashed with idealistic twinkles... that's Eil, cook supreme, friend *par excellence*. The song in her heart is reflected in the faces of those who know her best on the campus.

Sodality. Business Club. Dramatic Club 2, 3, 4. A.A.

Religion and Culture Form Citizens of Tomorrow.

Regis College Is Gateway to Way, Truth, Life.



MARGARET M. LOUGHMAN, A.B.
22 Downer Avenue
Dorchester

Merry Peg is never one to despair over impossible assignments or incidental worries. Somehow, Peg holds a deep-rooted grudge against jay-walking trees, yet she claims her hobby is driving. Holy Cross will always have a special place in this Regisite's heart. Nights spent at Regis in the Boat have left indelible memories of college fun for Peg. "Peg o' My Heart," the girl with the cheery Regis way.

Sodality. Ethelon Club.

BARBARA M. LYNCH, A.B.

311 West Emerson Street
Melrose

The girl with the luscious ring is Barb, brilliant Sociology major from Melrose. Barb's unusual hobby is refinishing antique furniture, in preparation for her early American home. Intrepid Barb enjoys the exciting pastime of water skiing. Inefficiency tops her list of pet peeves. An avid letter writer, she believes in the adage, "To get a letter, write a letter." Teaching handicapped children is her aim.

Sodality. Ethelon Club. I.R.C. 1, 2. A.A. 1, 2.



Regis College Is Gateway to Way, Truth, Life.

ELIZABETH A. LYNCH, A.B.

670 Columbia Road

Dorchester

Betty Ann is the elder and practical of the famous, charming Lynch sisters. Although she is an English major, her dislike for the B.P.L. is vehement. Chosen as attendant at the Junior Prom, B.A. was Chairman of the Dad-Daughter Banquet, during Junior Week. B.A. and Jane's beige Chevvie Belle-Aire is their pride and joy. Betty Ann anticipates teaching the first grade next year, after vacation is over.

Sodality. President 1. Press Club.



JANE P. LYNCH, A.B.

670 Columbia Road

Dorchester

A perfect complement of B.A., Jane's favorite topics of conversation are brother Bill, cousin Jack and Mrs. Barrell. Room 448, B.A. and Jane's abode for the last four years, has been the meeting place for all English majors to air their woes. A true confidante, Jane's sense of humor and glowing personality make her tops with everyone and an asset to any group. Like B.A., Jane hopes to teach the first grade.

Sodality. Press Club. Glee Club 1, 2. N.F.C.C.S.





MARY E. LYNCH, A.B.

18 Louise Road

Belmont

A staunch Republican, probably one of Mary's biggest disappointments, this year, was her inability to vote. Very seldom boisterous about her ideas, she nevertheless remains adamant. This short, dark-haired student excels beyond the average in at least one sport, tennis, and in one subject, Typing. She is intent on extracting the most enjoyment out of life and in many cases Mary succeeds quite well, according to reputation.

Sodality. Business Club; Vice-Pres. 4. A.A. 1, 2.



CHRISTINE M. LYONS, A.B.

100 Wilmington Avenue

Dorchester

Versatile Chris, conscientious Clothing major, contemplates teaching and marriage. No project phases her, whether it be rug hooking, refinishing furniture or simply knitting and crocheting, for she is adept at all. Her Japanese souvenirs are her prize possessions and the envy of the campus. Chris has a sparkle in her eye, matched only by the sparkle on her hand.

Sodality. Alpha Omicron Tau. Phi Upsilon Omicron; Pres. 2, 4. A.A. 1, 2.

Religion and Culture Form Citizens of Tomorrow.



MARY H. MALONE, A.B.

11 Church Street

Newton

New and proud possessor of a driver's license, Mary is often glimpsed through a cloud of dust, racing around the circles at Norumbega, on her daily trip to first-hour class. Good natured to the core, she has been most sympathetic in anyone's trouble. Loyalty is a prerequisite in Mary's friendship. Her great conscientiousness will make her tops in Math Research.

Sodality. Mathematical Club. Dramatic Club. Glee Club. Mission Unit 3, 4.



GERALDINE A. MARTIN, A.B.

19 Wheatland Avenue

Dorchester

Gerry, the girl who glories in Summers at Cape Cod, majored Sociology during her Regis days. Anyone who saunters past Room 421 in the Boat can hear the click of her knitting needles, for Gerry always knows the latest vogue in knit-wear. Her sociability makes her an asset to any group. Speech Therapy, travel and more Summers on Cape Cod are in Gerry's crystal ball.

Sodality. Ethelon Club. Dramatic Club; Vice-Pres. 4. Mission Unit 3, 4.

Religion and Culture Form Citizens of Tomorrow.

Regis College Is Gateway to Way, Truth, Life.



JANET A. MARTIN, A.B.

202 Brown Street

Waltham

The bombshell from Waltham... Janet, whose lovable good humor has won her a host of friends. See those pages flying? Trig, Calculus, Physics all simplify before her eyes. Basketball, good books and just being interested in people occupy most of her time. To Jan, of the impish eyes and warm sincerity, go hopes of success in her future career in the Mathematical field, that of Engineering in particular.

Sodality. Mathematical Club. A.A.

MARY E. MARTIN, A.B.

203 Wren Street

West Roxbury

"What did you make today, Mary?" is the question passed around the table at lunch each day. Her date and nut bread is now a favorite. Summers at Scituate are tops with her. A sewing and knitting enthusiast, Mary occupies her spare moments with these two pastimes. Rooming with Georgette and Jean for the last three years, Mary is a favored resident of the Boat.

Sodality. Alpha Omicron Tau. Dramatic Club 2. I.R.C. 4. A.A. 1, 4.



Regis College Is Gateway to Way, Truth, Life.

EILEEN P. McDONOUGH, A.B.

12 Kenilworth Road East Milton

Dark wavy hair, an infectious grin, Eileen has that fascinating Irish way. A Soc major, she enjoys particularly working with small children. Wonderful recollections of a Summer in Europe keep her interested in the faraway places of the world. As Mistress of Ceremonies at the Mission Show, and Chairman of Ring Day, Eileen has proved herself competent.

Sodality. Ethelon Club. Glee Club 3, 4. Dramatic Club 3. A.A. 1, 2.



ROBERTA F. McDONOUGH, A.B.

12 Kenilworth Road East Milton

Blonde Bobbie, Business major and sister of Eileen, eagerly gives forth on vital information about her younger brothers. Bobbie is always the merry part of any group and she recalls vividly experiences during her European trip with Eileen. Nantasket Summers have always been a favorite with her. A busy young lady, Bobbie likes to chat over coffee with friends. Sweet as they come is Bobbie of the optimistic heart.

Sodality. Business Club.





EMILY M. McGARRAHAN, A.B.

387 Adams Street

Milton

Emily's vibrant personality has kept the residents in spasms for four years. Cape Cod in the Summer, with sailing and swimming, are Heaven to Em. Trips to Bermuda with Ed, Audrey and Joan and to North Carolina with roommate Lorraine keep Emily bubbling with enthusiasm. She is looking forward to spending this Summer in European countries.

Sodality. Ethelon Club. Dramatic Club 2, 3. Mission Unit 4. A.A. 2, 3.



CATHERINE F. McNAMARA, A.B.

35 Blenford Road

Brighton

Cathy, golden haired enthusiast of her field of concentration, Clothing, has aspirations for teaching Home Economics. This field has held her interest while at Regis, together with serving as Senior Veep of Alpha Omicron Tau. Dependable day hop from Brighton, four years of riding buses has developed into a strong aversion to them. Usually seen with Jeannine.

Sodality. Alpha Omicron Tau; Vice-Pres. 4. Kappa Omicron Phi 4. Art Club 4. Dramatic Club 1, 2. A.A. 4.

Religion and Culture Form Citizens of Tomorrow.



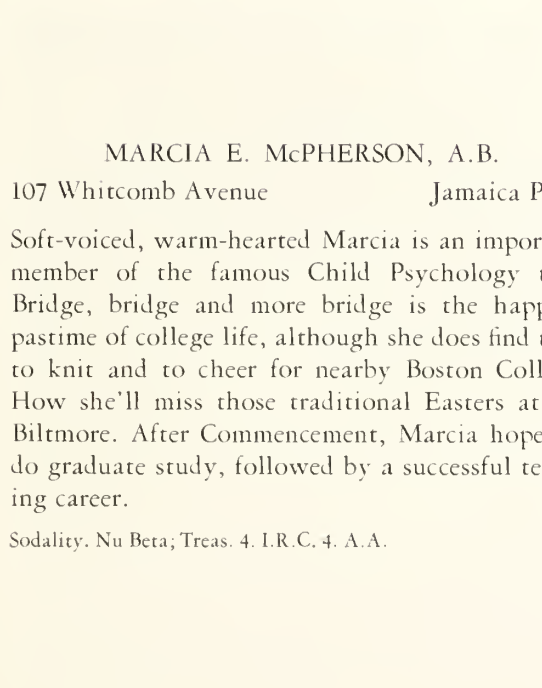
PATRICIA A. McNIFF, A.B.

141 Lewis Road

Belmont

Tall, efficient Business student, Pat plans eventually to get married. In the meantime, she will use her major in a secretarial job. Her two-weeks' trip to Florida, in the Fall of Senior year, was an event she will never forget. She has a particular weakness for coffee and likes to spend a free hour, now and then, in Weston. Usually she is accompanied by Mary Lynch on these delightful jaunts, very necessary respites.

Sodality. Business Club. A.A. 1.



MARCIA E. McPHERSON, A.B.

107 Whitcomb Avenue

Jamaica Plain

Soft-voiced, warm-hearted Marcia is an important member of the famous Child Psychology trio. Bridge, bridge and more bridge is the happiest pastime of college life, although she does find time to knit and to cheer for nearby Boston College. How she'll miss those traditional Easters at the Biltmore. After Commencement, Marcia hopes to do graduate study, followed by a successful teaching career.

Sodality. Nu Beta; Treas. 4. I.R.C. 4. A.A.



Religion and Culture Form Citizens of Tomorrow.

Regis College Is Gateway to Way, Truth, Life



PATRICIA A. MEARA, A.B.

56 Burke Street

South Boston

Short, cropped black hair and straight bangs, oxford grey suits and white bucks form the perfect collegiate picture, a universal opinion of Pat. Despite much time spent in the Chemistry laboratories and serving as Chairman of the Student Affiliate, American Chemical Society, Pat found time for fun. After graduation, her hopes tend equator-wise, to South America as a Chemist with Ann and Joan.

Sodality. L.P.C. Student Affiliate A.C.S.; Pres. 4.

JEAN G. MEEGAN, A.B.

34 Rangeley Road

Waltham

Jean, calm, peaceful, undisturbed, is ruffled only by noisy people. Avid Biology major, she and Kate are seen any time, climbing the Science Building hill, proudly clutching bottles of mysterious specimens. Flair for sewing, love for good books, the color brown are tell-tale characteristics. Generous, warm-hearted Jean, with a future as Lab Technician, is bound to be successful in her work as a scientist.

Sodality. L.P.C. A.A.



Regis College Is Gateway to Way, Truth, Life.

CORINNE J. MOLLOMO, A.B.

352 Winter Street

Weston

For three years, this Soc follower commuted from Newton Centre. Reading, tennis and swimming are foremost on her list, with conversation a well-known, recognized and preëminent pastime. Her collegiate devotion is alternately divided between Boston College and Holy Cross. To Paul Wellman, novelist, she rates high reviews. Following Degree Day, Corinne hopes to enter Medical Social Work at once.

Sodality. Erhelon Club.



LOUISE E. MORIN, A.B.

118 Cross Street

Central Falls, R. I.

Louise, dark-haired picture of sophistication, hailing from the littlest State, is a true symbol of a real friend. For any information on sports, ask Louise, for her social calendar includes attendance at all sports events with her Rhode Island buddy. Antithesis of carelessness, she is trim and neat for every occasion. Her future should insure the best, whether it be in the field of Advertising or in Journalism.

Sodality. Press Club. *Regis Herald*. *Hemetera*. MT. REGIS.





CYNTHIA MULLEN, A.B.

180 Thacher Street

Milton

Cynthia is the sweetly sophisticated lady of the perfect disposition and unpretentious intellect. A blazing fireplace, good books, catchy folk music make life complete. B.U.'s loss at the end of Sophomore year was Regis' gain, and she quickly adapted herself to new surroundings. Vitally concerned with current events, she headed I.R.C. in its regional commission. Efficient Cynthia is as fascinating as her name.

Sodality. Leo XIII Club. I. R. Commission Chairman 4.



HELEN L. MURPHY, A.B.

171 Orchard Street

Belmont

Bubbling with conversation, warmhearted, friendly to everyone, there's never a dull moment with Helen. The last word in style, she devotes much time to her Clothing major. No recreation surpasses hockey and no team equals the Bruins. Summers find her at Falmouth, but a cruise to Rio is foremost in her travel ideas. A career in Designing is her choice for the future.

Sodality. Alpha Omicron Tau. Kappa Omicron Phi; Treas. 3, 4. A.A. 1, 2, 3.

Religion and Culture Form Citizens of Tomorrow.



MAUREEN E. MURPHY, A.B.

288 East Street

East Walpole

Those exquisite handknit socks Maureen always wears tell at a glance that her interest is knitting. Another favorite diversion is keeping her diary up to date. As soon as Spring rolls around, her tennis racket gets a good work out. These various hobbies, plus class work and an active social life, keep Maureen busy. Everything she undertakes is excellently accomplished.

Sodality. Alpha Omicron Tau. Kappa Omicron Phi; Archives 3; Pres. 4. Dramatic Club 1, 2, 3. I.R.C. 2. A.A.

MARY F. NORTON, A.B.

50 Sunnyside Road

Quincy

Our stately Prefect of Sodality can always be depended upon to solve your problem. The walls resound with, "Hurry up, Mary." Skippy is a subject on which Mary never tires of talking. Lone survivor of our German Class, Mary is an English major, with German her allied subject. Reading and listening to music are tops with her. Graduate study and teaching beckon Mary.

Sodality; Prefect 3, 4. Government 4. Press Club; Sec. 2. Sigma Tau Phi.



Religion and Culture Form Citizens of Tomorrow.

Regis College Is Gateway to Way, Truth, Life.



ELIZABETH J. O'BRIEN, A.B.

77 Bay State Road Belmont

At all times, a willing hand, generous chauffeur with her familiar Packard, a burst of energy — all these characterize Betty. One of Regis' first two Art concentrators, Betty devotes much time to developing this talent. Enthusiastic supporter of the A.A., Betty's favorite recreation is participating in every sport. Teaching Art holds top place in her after-Degree-Day dreams.

Sodality. Alpha Omicron Tau. Art Club 2, 3, 4. Dramatic Club 1. A.A.; Pres. 4.

CLAIRE C. O'CONNELL, A.B.

319 Commonwealth Avenue Boston

Summers at Scituate with Claire Russell are tops with her. Vitally interested in Sociology, Claire aspires to help juvenile delinquents in Court Work. She recalls, with varied feelings, her visit in North Carolina and her party after a Regis dance, last year. German and week-end studying find no place in her heart. Gay times and parties remain Okie's favorites.

Sodality. Ethelon Club; Vice-Pres. 3; Pres. 4. Mission Unit. A.A. 2, 3, 4.



Regis College Is Gateway to Way, Truth, Life.

MARY J. O'CONNOR, A.B.

26 William Jackson Avenue Brighton

Day-hopping redhead from Brighton, Mary Jane is a Home Ec Foods major. Wintertime means she can be found any time on the slopes of the Commonwealth Country Club or at North Conway. Summertime and she heads West to Michigan. M.J.'s prime topics of conversation are Jack, my Dad or Mum and I. The A.D.A. will get the best in one of '53's sweetest graduates.

Sodality. Alpha Omicron Tau. Dramatic Club 1, 2, 3. A.A. 1, 2, 3, 4.



PATRICIA M. O'DONNELL, A.B.

3 Hampstead Road Jamaica Plain

Petite resident of Jamaica Plain, Pat has been a four-year advocate of Sociology. Being an athletic type of person, undoubtedly accounts for Pat's devotion to basketball as a sport and in particular to basketball players in khaki. Among her chief thrills is dancing at Boston College or under the stars at Scituate's Hatherly Club. Psychiatric Social Work is Pat's proximate aim, after her sheepskin.

Sodality. Erhelon Club. I.R.C. 4. A.A. 4.





JEANE ANN O'NEIL, A.B.

38 Commonwealth Avenue Chestnut Hill

With a bent for writing and a genuine interest in newspaper work, Jeane Ann proved to be a definite asset to the Regis publications. Her chief talent lies in poetry, in which she excels and which comes almost as easily as signing her name. Always enthusiastic about even simple pleasures, Jeane Ann gets just as excited over the good fortunes of her friends as her own.

Sodality. Press Club. *Regis Herald*. *Hemetera*. MT. REGIS. A.A. 2, 3, 4.



JOAN C. O'REILLY, A.B.

50 Bradford Street Lawrence

Joanie from Lawrence specialized in Sociology and hopes to do Social Work with children, upon leaving Regis. She and Gerry have been faithful occupants of Room 421 for three years. Summers at Hampton and soda jerking have been her *pièces de résistance* during vacations. Thoughts of a week end in New York, in the Fall of 1952, still make her eyes dance.

Sodality; Treas. 4. Ethelon Club. Dramatic Club 2, 3, 4. Mission Unit. A.A. 1, 2.

Religion and Culture Form Citizens of Tomorrow.



MARJORIE R. O'REILLY, A. B.

4 Glen Street

South Natick

One of the commuters from Natick, Marjorie has always been noted for her deep thoughts and aquatic abilities. She dislikes intensely complexities and is devoted to the color white and prize-fighting. She has two ambitions: to visit Liechtenstein and to show her chess technique by entering a tournament. Dry humor and a philosophic mind typify traits in Marjorie.

Sodality. Government 3. Lambda Tau Phi; Pres. 3. Glee Club 1, 2. A.A.; Treas. 3, 4.

JEANNE T. O'SULLIVAN, A.B.

24 Green Street

Woburn

Famed for her Stag Dance recitation, Sully has whizzed through the vigorous routine of college life. Love of laughter, people and Regis characterize her as one of the outstanding members of the Class of '53. As Chairman of the Junior Bridge and Senior Class President, she has worked untiringly. Endowed with Irish sincerity, Sully is a true Regisite.

Sodality. President 4. Press Club. Dramatic Club; Vice-Pres. 3. I.R.C. 2, 3, 4. A.A. 2, 3.



Religion and Culture Form Citizens of Tomorrow.

Regis College Is Gateway to Way, Truth, Life.



VILMA M. PADOVANO, A.B.

34 Wheeler Street

Leominster

Capability, charged with bolts of energetic enthusiasm, electrifies the magnetic person that is Vil. She waded through French phonics, knotty Student Government problems and Dean's List qualifications with ease. A past of European travel, a future of homemaking added to sincerity indicate why "We Go Padovano." Slim package of large ideals characterizes Vil.

Sodality. Government 2, 3; Pres. 4. President 2. Language Club. A.A. 1, 2.

JUDITH A. PERAULT, A.B.

164 South Street

Fitchburg

Tucking away her future securely under her arm, Judy of the photogenic smile will step into many "open sesame" to her sparkling personality. Magazine modelling, an aversion to olives and plans to safari to South America make a versatile combination to open the elusive lock of success. Judy has proved herself a true administrator of big doses of happiness.

Sodality. Press Club. Glee Club. Dramatic Club; Program Mgr. 2; Treas. 3.



Regis College Is Gateway to Way, Truth, Life.

KATHRYN N. PFAU, A.B.

229 Weld Street

West Roxbury

Proof that nice things do come in small quantities, our Kay is fun to know and fun to be with. Majoring in Business, she desires to apply her Shorthand and Typing to F.B.I. work, after Graduation. Eating, she claims, is her favorite pastime, with a craving for frozen pudding ice cream her most cherished dish. A bundle of energy, a cooperative spirit, a burst of enthusiasm, this spells our Secretary-To-Be.

Sodality. Business Club. A.A. 2, 3, 4. Mr. REGIS.



OLIVE A. PIRANI, A.B.

20 Grove Street

West Medford

Conscientious Business major with hopes for a career in Accounting, Ollie is well-known, well-liked by all. Her varied abilities include making her own clothes and figure skating, in both of which she is very proficient. Pleasant memories include trips to Yale and Harvard week ends. She wants to travel to Europe and California in the future. Always trim and neat, generous and fun-loving — Olive.

Sodality. Business Club.





ANNE M. PONCH, A.B.

111 Bridle Path Road Springfield

Always on the alert for excitement, P.O. is the essence of versatility and vitality. Her interests range all the way from composing deep poetry to drawing cartoons and just plain "doin' nuttin'." Her special pride is her nautical room, shared with Mim and Jul. A true leader is Anne.

Sodality. Government; Treas. 2. Press Club. Glee Club 1, 2. Art Club 4. C.A. 4; Pres. 3. Week-End Club 2; Co-Chairman 3. *Regis Herald*; Editor 4. *Hemetera*. Mr. REGIS. A.A.; Publicity Mgr. 2.



SHEILA S. POST, A.B.

222 Washington Street Gloucester

This talented Business major was Glee Club Director during Junior and Senior years, when her love for music was vivified. To rejuvenate us when things depress us, Sheila always comes through with, "Let's go to the Caf and forget everything." Our gracious Junior Prom Queen, Sheila's dignified carriage shows to advantage her flair for clothes.

Sodality. Business Club; Treas. 3. Glee Club; Director 3, 4; Pres. 4. Mr. REGIS; Bus. Mgr.

Religion and Culture Form Citizens of Tomorrow.



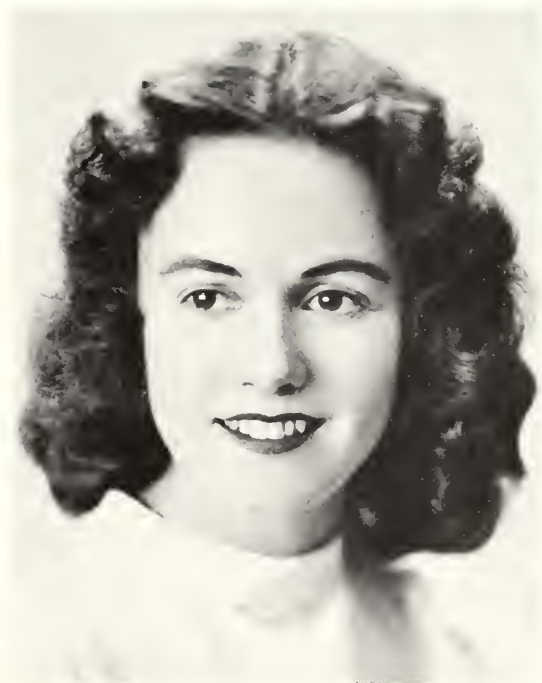
CATHERINE J. POWERS, A.B.

78 Oak Street

Taunton

With a flat A revealing her Taunton residence, Kay also exposes her friendly manner. Majoring in Sociology, she is keenly interested in putting it in practice. Seen often with Ginnie and Rita, she brings laughter and fun to 413. Supporting the Dramatic Club and Sodality, as well as Soc, proves her varied interests. Always helping and interested - that's Kay.

Sodality; Sec. Ethelon Club, Dramatic Club 3; Programs 4. I.R.C. 2, 3. Art Club 4. C.A. 3. A.A. 3.



CLAUDETTE E. PREVOST, A.B.

178 Main Street

Keene, N. H.

The dark-eyed beauty of the Boat, Claudette forms an essential part of Room 426 triumvirate. Her most pleasurable pastime is joy-riding with her roommates in the shiny blue convertible. She spurns vehemently the typical Regis sport of writing term papers. Doubtless, her poise and charm will stand her in good stead as a teacher. Here's to success for our little Dette.

Sodality. Leo XIII Club; Sec. 2; Vice-Pres. 4. I.R.C.; Sec. 4. Glee Club; Sec. 4. A.A. 1.

Religion and Culture Form Citizens of Tomorrow.

Regis College Is Gateway to Way, Truth, Life.



JOAN M. QUINN, A.B.

77 Toxteth Street

Brookline

Joan is a never-to-be-forgotten paragon of fashion, whose sleek, short hair cuts were the envy of many. Provocative nonchalance, her gift; untidiness, her keen dislike. Contagious laughter revealed Joan enjoying life with Caf cohorts. Remember those Easters at the Biltmore? Her ambition, after college days, includes Private Secretary position and jaunts through Europe, revelling in historic and scenic beauty.

Sodality. Business Club. Glee Club. Dramatic Club 2. A.A. 2, 3, 4.

DOROTHY T. REGAN, A.B.

711 Beacon Street

Newton Centre

With twinkling blue eyes and gentle demeanor, Dotty conscientiously majored in Foods, preparatory to a career in Dietetics. Spare moments find her sewing. Her favorite sports include ice skating, tennis and bowling. Pal of Barb, this Chaplain of Phi Upsilon Omicron anticipates receiving her A.D. A. Sweetness crowned with sincerity characterize Dotty, true friend.

Sodality. Alpha Omicron Tau. Phi Upsilon Omicron; Chaplain. A.A. 1, 4.



Regis College Is Gateway to Way, Truth, Life.

CLAIRE H. RUSSELL, A.B.

96 Robbins Road

Watertown

Claire is the petite blonde Queen of the Noël Ball in 1951. Her slim figure may well be marveled at, since her favorite foods are frappés and Italian spaghetti. As a member of the Student Government, Junior year, she worked untiringly and won the post of Vice-President, this year. She likes the color blue and probably this accounts for her preferring the Navy.

Sodality. Government 3; Vice-Pres. 4. Ethelon Club; Sec. 2. A.A. 1, 2.



JANE F. RYAN, A.B.

67 Colonial Parkway

Manhasset, N. Y.

Petite and sweet, our Jane from Manhasset is remembered for European travels. She has intrigued all of us with her tales of faraway places and people. She and Kathie shared the corner room in the renowned Wing for three years. A girl whose joy of life is evidenced in her warm smile, Jane is one of our Regis Home Economists. Fortunate are all her prospective pupils.

Sodality. Alpha Omicron Tau. Kappa Omicron Phi; Sec. 4. Dramatic Club 2, 3. A.A. 1, 2, 3.





CONSTANCE M. SHEERIN, A.B.

32 Orchard Street Jamaica Plain

Sweet sophistication, unpretentious nature, quiet friendliness summarize Connie's earmarks. Excelling in sewing, fishing and riding, she is an artist with ceramics. Memories of Biltmore Easters, with the six, Holy Cross formals, Summers at Green Harbor, skiing trips to North Conway make life complete. The future holds an individual dress-maker's shop for Connie.

Sodality. Alpha Omicron Tau. Art Club 2, 3, 4. A.A. 2, 3, 4. I.R.C. 4.



M. FELICE SPUGNARDO, A.B.

34 King Street Rockport

Enthusiastically waving a scalpel, Felice can be heard warding off comments, while displaying her latest biological specimen. Formaldehyde and forceps combine for her laboratory work of the future, while a strong liking for coffee takes first place. A flair for photography, both behind and in front of the camera, plus a hula and culinary excellence present a Rockportite of cosmopolitan personality.

Sodality. L.P.C. A.A. 1, 2.

Religion and Culture Form Citizens of Tomorrow.



JOAN A. STEPHENSON, A.B.

361 Dedham Avenue

Needham

Prime example of combining business with pleasure is this Needham traveler. Dean's Lister for four years, she still had time to devote to Holy Cross and M.I.T. Ever ready to play cards or go to a party, Joan is skilled at both. Never at a loss for words, she can talk at length on any subject. Yet she listens just as well, a virtue of a never-to-be-forgotten friend.

Sodality. L.P.C.; Pres. 4. Glee Club. Student Affiliate of A.C.S.; 3, 4.

DENYSE Y. ST. GERMAIN, A.B.

648 Cumberland Hill Road Woonsocket, R. I.

"Laugh and the world laughs with you." That seems to be Denyse's motto. No matter how hard or busy a day may be, she finds time for a hearty laugh along the way. Harvard can always count on her loyal support. The stack of pocket editions on her desk attest to the fact that her favorite diversion is reading. Sometime in the future she wishes to travel in Europe. Her fine command of French should help her there.

Sodality. Business Club. A.A. 1, 2, 3.



Religion and Culture Form Citizens of Tomorrow.

Regis College Is Gateway to Way, Truth, Life.



E. JEAN SULLIVAN, A.B.

32 Holly Road

Waban

Lively M.C. of the Mission Show and other productions, Jean occupied Room 427, in the Boat, with Georgette and Mary. Esteemed Conductor of the outdoor Glee Club, Jean claims that playing the zither is her hobby. Possessor of an enviable off-hand manner, she is seen in the midst of sparkling conversationalists. A Business major, she advocates leisurely dining. Wit and humor, plus a sensitive nature, are hers.

Sodality. Business Club. Glee Club. A.A. 1.

VERA A. SULLIVAN, A.B.

66 Bradstreet Road

North Andover

Little Vera, the fortunate winner of the N.F.C.C.S. trip to Europe, Freshman year. True blue typifies her and Gerry, as roommates, since the beginning of their sojourn at Regis. Vera's enthusiasm for Home Economics never diminished, even after long hours of Seminar. Quiet charm and reassuring kindness are traits that few possess as fully as Vera of the mild ways.

Sodality. Alpha Omicron Tau. Art Club 2, 3. C.A. 1, 2, 3. A.A. 1. *Hemetera* 4.



Regis College Is Gateway to Way, Truth, Life.

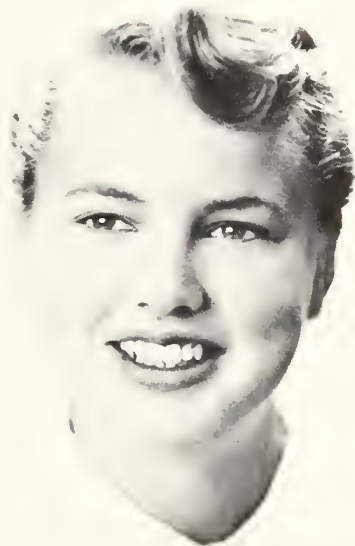
JANET A. SUTHERLAND, A.B.

771 Boylston Street

Chestnut Hill

Resident of the fourth floor Wing, Bobbie carries her height as majestically as a model. Her interest in skiing is combined with her hobby, knitting, for she is able to make her sweaters and socks for trips to North Conway. Her avowed pastime, which is sleeping, is coupled with one of her dislikes — getting up for a first class. To avoid the disappointment of an empty mailbox, she manages to write a letter daily.

Sodality. Alpha Omicron Tau. A.A.



ROSE M. TERRASI, A.B.

237 Main Street

Maynard

Versatile Rose carefully divides her time between juggling French verbs and establishing a reputation for herself as "*la cuisiniere par excellence*." Fondness for the royal purple betrays her queenly nature. Dancing, swimming, happy memories of Hampton shores keep life exciting. Post-June plans include European visits and a teaching career. Sweetness and exuberance will keep Rose a flower in our hearts.

Sodality. Language Club; Vice-Pres. 4.





IRENE H. TERRY, A.B.

15 Pleasant Street

Hopkinton

Easy-going, undisturbed, unhurried are the most apt words to describe Terry. Commuting from Hopkinton, Terry spends her Regis hours in the Home Ec Foods Laboratories. Her long blonde hair, with which she can do about anything, has been the envy of her colleagues. Tops in her sports category are swimming and riding, which she does with gusto, to offset the results of her Foods Laboratory concentration.

Sodality. Alpha Omicron Tau; Publicity 4. I.R.C. 1.



JULIA R. TIERNEY, A.B.

Dean Avenue

Warehouse Point, Conn.

An eternity of happiness capsuled into the sudden twinkle of brown eyes, an elfin grin that is focused on the wide world and behind it is Jul, well-spring of deep sincerity. A specialist in sheep, a realistic idealist, a connoisseur of clothes, this Business Building traveler looks on life with discerning eyes and draws out the best in everyone. Time will not dim the value of a priceless friend, Jul, generous typist.

Sodality. Business Club. *Regis Herald* 4. A.A. 4.

Religion and Culture Form Citizens of Tomorrow.



CONSTANCE M. TORRISI, A.B.

549 Prospect Street

Methuen

When convinced of a point, Connie will stick to it unflinchingly and nine chances out of ten even swing others over to her way of thinking, with her powerful arguments. Hurrying hither and yon or rapidly typing an assignment, she usually has a song on her lips. Connie enjoys life to its fullest, never letting an opportunity for a good time slip past her.

Sodality. Leo XIII Club; Sec. 4. I.R.C.; Treas. 4. Glee Club. Dramatic Club 3.



GEORGETTE E. TRUDELLE, A.B.

16 Ohio Street

New Bedford

Truly fond of music, Georgette has been a member of the Glee Club since Freshman days. She abhors empty mailboxes and noisy gum chewers. No matter who says, "Oh George, what am I going to do?" she will take time to listen to her problem and help her to solve it. Swimming, sailing and golf in New Bedford in the Summer and skiing at North Conway rate first place.

Sodality. Treasurer 2. Press Club; Vice-Pres. 4. I.R.C. 4. Glee Club. C.A. 1, 2, 3. A.A.

Religion and Culture Form Citizens of Tomorrow.

Regis College Is Gateway to Way, Truth, Life.



SANTA M. VADALA, A.B.

59 Chambers Street

Boston

Sociology follower, with a dramatic flair, who travels from Boston and boards the Regis bus at Kendall Green, Santa has an aversion for missing trains, after riding the B. & M. for four years. A friendly manner denotes her vibrant personality and an interest in people. Regina's companion at ROC in Maryland, last Summer, Santa hopes to wear the ensign bar, after Commencement, and to visit sunny California.

Sodality. Ethelon Club. I.R.C. Dramatic Club; Treas.

HELEN M. VALLE, A.B.

34 Auburn Street

West Newton

Helen possesses a happy, friendly nature, which is often difficult to find in this workaday world. Her love of children exemplifies this. With hikes to the Business Building and working in the Caf, she has few idle moments for frivolizing, between rides on the Regis bus. Helen enjoys sewing very much and succeeds in making many chic clothes for her wardrobe.

Sodality. Business Club. I.R.C. 2, 3. C.A. 1, 2. Dramatic Club 2, 3. Mission Unit 1.



Regis College Is Gateway to Way, Truth, Life.

ANN M. WALKER, A.B.

176 Mystic Avenue Somerville

Chemistry concentrator from Somerville, Ann derives her greatest enjoyment from Seminar. As a matter of fact, rumor says that she would like, one day, to devote her time to conducting Seminars in Chemistry. Of an extremely sympathetic nature, she was one of Pat's chief consolers at the time of the death of Pat's beloved white mice. Her future points to South America.

Sodality. L.P.C.; Vice-Pres. 3. Student Affiliate of A.C.S. 3, 4. A.A. 1, 2.



LENORE K. WALTON, A.B.

455 Glen Road Weston

Lennie, lady of fashion, faultlessly advised what to wear when. Love for sailing, foreign dolls, good music are tell-tale trade-marks. The perfect hostess, her fondest aspirations include a large family, Summers at Marshfield and a trip abroad. Lovable Lennie is the girl whose sincere friendliness will not be forgotten.

Sodality. Vice-President 3. Alpha Omicron Tau. Kappa Omicron Phi; Sec. 3; Vice-Pres. 4. Mr. Regis; Bus. 4. A. A. 2, 3, 4. *Herald* 4.





ANNE M. WARD, A.B.

7 Heckle Street

Wellesley Hills

Psychology-majoring day hop from Wellesley Hills, Anne, with Marcia and Frannie, is a pioneer in the newly-instituted Elementary Education course. An all-round Regisite, Anne favors swimming and tobogganning, with bridge topping her pastime list, at any hour. Well-known as her greatest dislikes are the U. S. Army in general and Operation Korea specifically. Her future comprises an A.M. and teaching.

Sodality. Nu Beta. I.R.C. 4. A.A. 2, 3, 4.



JANET M. WHITE, A.B.

25 Alhambra Road

West Roxbury

Janet of the classic beauty and lovely hair, finds Monday morning classes the only trying part of life. "Why is that Business Building so far away?" she queries. Bridge, the carpool coffee hour, anything blue and Harvard football games are her cherished delights. Sincerity, efficiency, warm friendliness, Jan's earmarks, will make her a successful business woman, when she takes her place after receiving her degree.

Sodality. Business Club.

Religion and Culture Form Citizens of Tomorrow.



MARJORIE M. WOOD, A.B.

13 Wheelwright Road

Medford

Once you hear Marjorie laugh, you will find it hard not to join in. Furthermore, she is likely to be smiling or laughing whenever you meet her. An avid hockey fan in the Winter, she turns to swimming in the Summer. Majoring in English and minoring in Library Science, her ambition is to work in a high school, college or federal library. Her greatest joy, Senior year, was to have Saturday classes removed from her schedule.

Sodality. Press Club.

LORRAINE M. WRIGHT, A.B.

290 South Washington Street North Attleboro

"See America First" the advertisements say and so Lorraine did. Probably not for that reason, but she has traveled extensively throughout the United States. She was the envy of the college Junior year, when she returned in February after a sojourn in Florida and displayed a glowing tan. Her combined retentive memory and ear for music enable her to pick up almost any tune on the piano and sing while playing.

Sodality. Press Club. Glee Club. I.R.C. 3, 4.



Religion and Culture Form Citizens of Tomorrow.

Regis College Is Gateway to Way, Truth, Life.



Standing in the Tower Gardens and looking toward Regis Hall, one sees the portico, through which students rush on their way to class or the Athletic Field.



Under the sponsorship of the Sodality, students offer perpetual Rosaries for peace, each day, in the serene College Chapel, where peace of soul is found.



Regis College Is Gateway to Way, Truth, Life.

SISTER MARY LORETTO, A.B.

Mercy Convent

Tai, Guam

SISTER MARY ROBERTA, A.B.

Mercy Convent

Tai, Guam

"Alice Blue Gown" is rendered
by a sweet songstress, Mary
Cahill.



"We're Just Wild About Harry,"
at the Junior Dad-Daughter
Banquet.





Looking for book numbers in the card index are Kay Bonanno, Sisters Loretto and Roberta.



All set for television tonight is a group of Seniors, as they settle in the living room at Regis Hall to tune in and enjoy their favorite program.



A mild spring day, a sleek convertible and a few free hours equal an afternoon of pleasure and these students take advantage of the opportunity at hand.



In one of their most frequent haunts, Jane and B.A. pore through the Readers' Guide.





Nimble fingers type rhythmically during class hours at the Business Building, as Seniors prepare for fascinating futures in the world of business.



Friends gather at a favorite study spot, Parterre steps of College Hall.



Sunday afternoon and time for a Tea Dance, as Seniors come downstairs.



Patty, Jean, Ann and Marcia pause on the stairs at Regis Hall to chat awhile before going downstairs to spend a few pleasurable moments viewing TV.



Marcy Cassen strikes a familiar pose, dancing one of her popular ballets.



Behind the scenes is Eileen Koster, busily adjusting the stage lights.

UNDERCLASSES





Junior Directory



Officers, Dotty Fraser, Margie Hassan, Catherine Tobin and Connie Lucchini, relax in parlors after successfully outlining yearly plans and events for Junior Class activities, eagerly awaited by '54.

Mary J. Abeel
51 Ferry Lane, Barrington, R. I.

Marie L. Albiani
25 Carruth St., Dorchester

Mary K. Alvord
55 Herrick Rd., Newton Centre

M. Patricia Avery
33 Upland Rd., Quincy

Margaret A. Begley
10 Van Ness Rd., Belmont

Patricia C. Bellini
61 Atherton St., Somerville

Carole C. Bocasky
21 Dalton Court, Peabody

Pauline D. Bolduc
3572 Acushnet Ave., New Bedford

Priscilla A. Bradford
185 Woodcliff Rd., Newton Highlands

Juliette A. Brassard
18 White St., Pawtucket, R. I.

Nancy A. Briggs
718 Church Hill Rd., Bridgeport, Conn.

Mary Jane Brigham
39 Woodside Rd., Winchester

Elizabeth A. Bryant
12 Fair Oaks Drive, Arlington



JUNIOR DIRECTORY



Liz and Joan examine Regis' crimson and gold banner, as Judy watches admiringly.

Allyn F. Bucklev
62 Webcower Rd., Arlington

Anne C. Bulman
258 Arborway, Jamaica Plain

Clara J. Buscaglia
Box 4591, San Juan, Puerto Rico

Alice M. Campbell
109 Central Ave., Newtonville

Mary L. Carr
17 Ocean Ave., Swampscott

Alison F. Cass
Central St., Topsfield

Mary T. Cataldo
59 Bow St., Lexington

Frances M. Cavaliere
29 Columbia Rd., Medford

Paula M. Clair
205 Homer St., Newton Centre

Marie L. Clogher
17 Upper State St., North Haven, Conn.

Joan E. Colleary
40 Pleasant St., Marlborough

Margaret J. Connelly
38 Codman St., Dorchester

Mary A. Conway
10 Bennett St., Wakefield

Bernardine E. Cooney
324 Madison St., Wrentham

Mary E. Coppola
9 Calvin Rd., Jamaica Plain

Kathryn E. Corcoran
137 Winnifred Rd., Brockton

Sylvia L. Corsini
9 Prince St., North Plymouth

Ann S. Courtney
12 Waldeck St., Dorchester

M. Patricia Courtney
109 Randlett Park, West Newton

Patricia A. Cronin
16 Suburban Rd., Worcester

Terese M. Crosby
70 Norfolk Rd., Arlington

Mary L. Crowley
231 Beech St., Belmont

Ann A. Cunningham
96 Etna St., Brighton

Patricia M. Cunningham
4 Lookout St., Gloucester

Marie V. Dalton
31 Shea Rd., North Cambridge

Mary M. Delicata
14 Churchill St., Newtonville

Adele C. Dengeleski
88 Lake St., Arlington

Rosemary A. Denmark
893 Main St., Hingham

Virginia M. Dennehy
1 Edgewood St., Worcester

Jeanne C. Devereaux
291 Nahant Rd., Nahant

Patricia A. Devore
Mill Hill Rd., Southport, Conn.





JUNIOR DIRECTORY

- Eleanor F. Dillon
47 Richardson Rd., Belmont
- Gloria M. DiSandro
60 Silver Spring St., Providence, R. I.
- Leona R. Donahue
336 Worcester St., North Grafton
- Maryanne N. Donoghue
571 V.F.W. Parkway, Chestnut Hill
- Joan M. Donovan
6 Sparhawk St., Brighton
- Anne E. Downey
589 Union St., New Bedford
- Jeanne M. Driscoll
24 Cross St., Belmont
- Mary D. Driscoll
1791 Beacon St., Brookline
- Arlene B. Drown
82 Tremont St., Barre, Vt.
- Ruth C. Duggan
40 Park St., West Roxbury
- Lillian E. Dyer
275 Clifton St., Belmont
- Kathleen A. Evans
71 Sherman Rd., Brookline
- Carol C. Faber
1581 Washington St., West Newton
- Catherine A. Ferney
55 Oak St., Walpole
- Rita I. Fichera
40 Summer St., Lawrence
- Dolors A. Filip
167 Lafayette St., Salem
- Paula M. Fitzsimmons
1590 Centre St., Roslindale
- Patricia M. Fleming
133 Marengo Park, Springfield
- Roberta C. Flynn
5 Winkley St., Amesbury
- Dorothy G. Fraser
5 Richland Rd., Wellesley
- Margaret M. Frates
323 Prospect St., Norwood
- Marcia E. Gaughan
Concord Rd., Sudbury
- Martha M. Gaumond
14 Webster St., Framingham
- Judith M. Gioiosa
75A Orchard St., Medford
- Anne-Marie Girardin
36 Woodside Rd., West Medford
- Grace J. Golden
Spring Avenue Rd., Troy, N. Y.
- Anne F. Grady
2 Earle Rd., Wellesley
- Mary J. Grady
77 Newton St., Drummondville, Quebec, Canada
- Ann E. Graney
108 North Marvane Ave., Auburn, N. Y.
- Margaret M. Gray
100 Water St., Millinocket, Me.
- Jacqueline F. Guerard
Box 140 Mendon Rd., Manville, R. I.
- M. Patricia Haley
5 Norfolk Rd., Randolph



Winter floral arrangements interest Viv, Mary Jane, Dotty and Rita in the Foyer.

JUNIOR DIRECTORY

Virginia C. Hannigan
20 Houston Ave., Milton

Elizabeth A. Harney
74 Perkins St., Jamaica Plain

Margaret M. Hassan
West St., Amherst

Joanne H. Hickey
28 Park St., Shrewsbury

M. Patricia Hickey
115 Wolcott Rd., Chestnut Hill

Theresa F. Hook
28 Dustin St., Saugus

Claire A. Houle
99 Oak St., Laconia, N. H.

M. Bernadette Houston
Plain Rd., Wayland

Regina H. Hurley
56 Davis Ave., West Newton

Sheila N. Joyce
269 Main St., Woburn

Ann Marie Kellaheer
25 Cross St., Belmont

Jeanne F. Kenney
427 Old Colony Ave., South Boston

Marie T. Kenney
12 Latin Rd., West Roxbury

M. Helena Kenney
70 Walnut St., Milton

Mary Jane Kinne
113 Upland Rd., Quincy

Hilda E. Knight
32 Broad St., Monrovia, Liberia

Anne T. Lahive
7 Mulberry Rd., Milton

Vivian E. Lamoureux
702 Chestnut St., Manchester, N. H.

Elizabeth C. Langie
280 Culver Rd., Rochester, N. Y.

Mary C. Lawless
375 Westminster Rd., Rochester, N. Y.

Mary C. Leary
286 Main St., West Newbury

Jean E. LeVasseur
10 Columbia St., Fort Fairfield, Me.

Constance A. Lucchini
797 Broad St., Meriden, Conn.

Victoria L. Macchia
408 Main St., Medford

Marion E. Mahoney
1123 Revere Beach Parkway, Revere

Marlene A. Martin
269 Brownell Ave., New Bedford

Rosemary A. McAuliffe
35 Fairmount Ave., Wakefield

Mary J. McCarthy
12 White St., Concord, N. H.

Maureen L. McCarthy
57 Oxbow Rd., Weston

Maureen A. McCaughey
34 Homefield Ave., Providence, R. I.

Ann E. McCourt
203 Pond Ave., Brookline

Mary C. McGowan
15 Dartmouth Ave., Riverside, R. I.



Arlene, Connie and Anne point out alumnae in popular Regis multiplex.

JUNIOR DIRECTORY

Gail M. McGrath
40 Florence St., Somerville

Anne M. McInerney
723 Washington St., Brighton

Marjorie A. McIntyre
11 Newton Rd., Arlington

Louise M. McLaughlin
33 Maxwell Rd., Winchester

Norma A. McNamara
1954 Broad St., Hartford, Conn.

Fernande I. Melanson
154 Essex Ave., Rumford, Me.

Elaine A. Meserve
71 Beverly Rd., Arlington

Mary Ann Mirabello
51 Jaques St., Somerville

Regina M. Mitchell
69 Surrey St., Medford

Consuelo J. Morgan
59 Chandler St., Belmont

Bettye A. Morrissey
86 Sachem St., Wollaston

Bette L. Mullins
88 Bay State Rd., Belmont

Carol J. Murdoch
18 Longwood Rd., Milton

Cornelia A. Murphy
81 Brayton Rd., Brighton

Helen A. Murphy
4 Talbot Rd., South Braintree

Anne J. Nally
3 Ellsworth Ave., Cambridge

Ann E. O'Brien
57 Ocean St., Dorchester

Barbara A. O'Connell
165 Fairway Drive, West Newton



Pat, Catherine and Connie browse through the yearbook during a free hour.

K. Joan O'Connor
211 School St., Belmont

Alice M. O'Donoghue
186 Washington St., Belmont

Shiela A. O'Duggan
50 Dover Rd., Wellesley

Nancy C. Perry
584 Chestnut St., Waban

Ann L. Porter
220 Maple St., New Bedford

Angela G. Ricker
84 Washburn Ave., Portland, Me.

Margery E. Roche
66 Fairbanks Rd., Milton

Mary E. Roche
42 Hopedale St., Allston

Margaret M. Rogers
117 Allston St., Medford



JUNIOR DIRECTORY



Synchronizing their watches before class,
are Pat, Priscilla and Ann Marie.

Margaret F. Rowe
43 Brookside Ave., Belmont

Beatrice L. Russo
10 Hopkins Rd., Jamaica Plain

Ann M. Ryan
32 Rose Ave., Marblehead

Charlene M. Ryan
55 Engrem Ave., Rutland, Vt.

Marianne M. Sanderson
152 Vassal Lane, Cambridge

Carolyn M. Sanroma
1000 Walnut St., Newton Highlands

Barbara W. Scullane
18 Park Ave., Wellesley Hills

Helen M. Scully
24 West St., Medford

Regina A. Scales
750 Shawmut Ave., Boston

Teresa H. Skehan
46 Smyrna St., Houlton, Me.

Roberta E. Stanton
187 Radcliffe Rd., Belmont

Eleanor R. Sullivan
41 Yerxa Rd., North Cambridge

Helen E. Sullivan
39 St. John St., Jamaica Plain

Maureen F. Sullivan
181 Wren St., West Roxbury

Ellen I. Synan
113 Baxter Ave., Quincy

Imelda A. Tangney
16 Otis St., Milton

Patricia F. Thornton
39 Commonwealth Ave., Chestnut Hill

Catherine D. Tobin
4 Westminster Terrace, Brighton

Joan L. Turner
333 Common St., Walpole

Ann L. Wadden
159 Concord Ave., Cambridge

Marie A. Ward
28 Loring Ave., Salem

Mary M. Whalen
11 Harrington Rd., Lexington

Lillian C. Winn
91 Ashmont St., Dorchester

Pauline G. York
235 Mount Auburn St., Watertown

Sister Marie Xavier
Sacred Heart Convent, Jackman, Me.



Sophomore Directory



New Sophomore Class Officers, Pat Mulrennan, Rita Barry, Maryann Kennedy and Pat Teehan become very much engrossed in drawing up a varied and representative schedule of events for the coming year.

Agnes D. Badrena
Lucchetti No. 1217, Santurce, Puerto Rico

Janice M. Balfe
1520 Cambridge St., Cambridge

Rita E. Barry
53 Bay State Rd., Belmont

Sheila J. Barry
76 Oriole St., West Roxbury

Elizabeth M. Bellini
61 Atherton St., Somerville

Anne E. Bemis
60 Dartmouth St., Lynn

Marie A. Bertrand
394 Penobscot Ave., Millinocket, Me.

Helen W. Blanchard
7 Cottage Ave., Winchester

Rosemary A. Bolger
119 Pondfield Rd. West, Bronxville, N. Y.

Margaret R. Brennan
725 Commonwealth Ave., Newton Centre

Ann P. Buckley
602 Haverhill St., Lawrence

Phyllis F. Budrick
139 Main St., Quincy

Elizabeth A. Burke
192 Foster St., Brighton



SOPHOMORE DIRECTORY

- Carol A. Conroy
39 Sedgwick St., Jamaica Plain
- Camilla J. Costain
47 Granite St., Bath, Me.
- Frances L. Cremen
9 Oakdale St., Brockton
- Grace M. Cronin
23 Parsons St., Brighton
- Eileen M. Cunningham
44 Rittenhouse Terr., Springfield
- Jacqueline M. Cyr
13 Lenox Circle, Lawrence
- Helen L. Daily
120 Scituate St., Arlington
- Constance M. Dauplaise
132 Deane St., New Bedford
- Jeanne M. Delay
23 Bay State Rd., Boston
- Carol A. Delehanty
155 Franklin St., Westfield
- Evelyn M. DesRoches
33 Kingsbury St., Needham
- Elsie P. DiSandro
60 Silver Spring St., Providence, R. I.
- Muriel F. Doherty
71 Fessenden St., Newtonville
- Maureen E. Donnelly
6 Ridge Ave., Newton Centre
- Catherine C. Dowd
176 Fulton St., Norwood
- Constance M. Dowd
59 Bay State Rd., Belmont
- Elizabeth A. Doyle
4 Glenhaven Rd., West Roxbury
- Mary L. Drislane
11 Prescott Rd., Lynn



Jackie, Betty, Dottie, Banba, four Sophs, enjoy a popular pastime, letter reading.

- Patricia M. Carney
204 Larch Rd., Cambridge
- Joan M. Casey
183 College Ave., Somerville
- Alma M. Cauley
1874 Beacon St., Brookline
- Carole J. Clayton
1649 Northampton St., Holyoke
- Mary J. Collins
100 Day St., Norwood
- Janet M. Condrey
40 Middlesex Ave., Wilmington
- Mary A. Connolly
41 Lowell St., Waltham
- Joyce M. Connors
354 Highland Ave., Wollaston
- Marie T. Connors
11 Morrill St., Dorchester





SOPHOMORE DIRECTORY

- Mary E. Gilbert
15 Adams St., Somerville
- Ruth E. Gillis
176 Lovell Rd., Watertown
- Barbara A. Gilmore
15 Choate Rd., Belmont
- Elizabeth A. Gilmore
15 Choate Rd., Belmont
- Mary J. Gilmore
10 Haley Rd., East Braintree
- Nancy M. Goggin
28 Alton St., Arlington
- Sarah M. Gorman
182 Main St., Watertown
- Margaret M. Haller
47 Church St., Concord, N. H.
- Mary A. Hefron
20 Grove St., Arlington
- Dorothy A. Duffy
82-33 167 St., Jamaica, N. Y.
- Ann M. Dugan
34 North Main St., South Hadley Falls
- Denyse M. Dunbar
157 Governors Ave., Medford
- Elizabeth J. Dunbar
32 Middlecot St., Belmont
- Selma D. Egan
19 Winslow Rd., Brookline
- Arline M. Erickson
63 Bancroft Park, Hopedale
- Elizabeth S. Fahey
3 Essex Rd., Belmont
- Mary P. Fallon
147 Clafin St., Belmont
- Rita A. Farina
53 Bridge St., Newton
- Patricia A. Fay
24 Calvert St., Newport, R. I.
- Estelle F. Ferraro
2 Chester Ave., Westerly, R. I.
- Kathleen M. Finn
26 Prince Ave., Winchester
- Patricia A. Finnegan
155 Andrews St., Lowell
- Marguerite T. Flavin
39 Neponset Rd., Quincy
- Elinor M. Flynn
282 Waverly Rd., North Andover
- Banba A. Foley
275 Maple St., Burlington, Vt.
- Mary E. Ford
24 Oliver St., Framingham
- Ann L. Gallagher
580 Huron Ave., Cambridge



Maureen, Martha, Ann and Marie stop on the Parterre to unravel a knotty problem.

SOPHOMORE DIRECTORY

Joan M. Hennessey
73 Mercer St., South Boston

Patricia A. Hennessey
79 Sheephill Rd., Riverside, Conn.

Patricia A. Hogan
11 Knoll St., Roslindale

Ann M. Keaney
118 School St., Saxonville

Lian M. Keating
6 Squanto Rd., Quincy

Ann M. Kelleher
28 Dutton St., Malden

Barbara A. Kelley
42 Bartlett Rd., Winthrop

Maryann Kennedy
18 O'Neil St., Hudson

Roberta A. Koster
104-25 191st St., Hollis, Long Island, N. Y.

Marjorie A. Leary
10 Linn Ave., Auburn, N. Y.

Rosalie E. L'Ecuyer
6 Barclay Rd., West Roxbury

Lily R. Lee
19 Alden St., Newton Centre

Mary M. Leonard
290 Grant St., Framingham

Priscilla J. Mahoney
36 Batchelder St., Melrose

Marie T. Martin
34 Chestnut St., South Dartmouth

Ann Mathers
43 Seaver St., North Easton

Marie E. McAuliffe
8 Belton St., Arlington

Madeline D. McCarthy
90 Linden St., Whitman

Mary M. McCarthy
238 Governors St., Medford

Mary E. McCormack
72 Eastern Ave., Arlington

Carol F. McDermott
42 Bellevue Rd., Arlington

Joan M. McDermott
42 Bellevue Rd., Arlington

Virginia F. McGurk
672 Beacon St., Newton Centre

Jacqueline A. McLaughlin
67 Tucker St., Lynn

Eileen E. McNamara
36 Granville Rd., Cambridge

Helen D. Mezzanotti
31 Airlie St., Worcester

Judith I. Michaud
6 Elmwood Ave., Caribou, Me.



Parterre columns, a book set the stage for ideas from Lian, two Nancys and Mary.

SOPHOMORE DIRECTORY

Margaret T. Mitchell
12 Palmer St., Arlington

Constance A. Moe
257 Avon Rd., Springfield, Pa.

Dorothea M. Moran
207 Woodcliff Rd., Newton Highlands

Mary K. Moynihan
147 West St., Milford

Eleanor M. Mullane
3 Ayer St., Peabody

Patricia A. Mulrennan
12 Morris St., Everett

Dorothea E. Murphy
15 Faulkner St., Dorchester

Rosemary D. Murphy
28 Wamesit Rd., Waban

Anne G. O'Brien
99 Brooks St., Brighton

Brenda M. O'Connor
51 Welles Ave., Dorchester

Sylvia F. O'Donnell
448 County St., New Bedford

Adelaide T. O'Keeffe
111 Hammondswood Rd., Chestnut Hill

Maureen I. O'Leary
36 Wachusett Rd., Needham

Margot A. O'Meara
17 Riggs Ave., West Hartford, Conn.

Eleanor M. O'Neil
82 Day St., Auburndale



What's the latest? Inquire from Connie, Rusty, Pat and June as they chat.

Nancy S. Patch
32 Abbott St., Beverly

Janet P. Patterson
5 Ivy Court, Baldwin, Long Island, N. Y.

Gloria J. Peloquin
285 Main St., Spencer

Marilyn L. Quinn
174 Mendon St., Uxbridge

June R. Randall
59 Highland Ave., Lynn

Anne J. Raymond
255 Williston Way, Pawtucket, R. I.



SOPHOMORE DIRECTORY

Martha J. Smith
48 Griswold St., Cambridge

Martha P. Smith
35 Bartlett Ave., Arlington

Reda M. Stelmokas
306 West Third St., South Boston

Joyce A. Stephenson
361 Dedham Ave., Needham

Harriet E. Sullivan
23 Putnam Ave., Cambridge

Lois M. Sullivan
1116 Massachusetts Ave., Lexington

Marjorie A. Sullivan
360 Market St., Brighton

Nancy E. Sullivan
23 St. Elmo Rd., Worcester

Patricia L. Teehan
52 Tufts St., Arlington

Patricia A. Thalheimer
111 Whitney Rd., Medford

Barbara A. Thompson
71 Trenton St., Melrose

Jean L. Toomey
74 Richmond Rd., Belmont

Paulita M. Twomey
144 North Main St., West Hartford, Conn.

Elizabeth A. Uhlinger
194-04 110 Rd., Hollis, Long Island, N. Y.

Margaret L. Vincent
29 Manchester Rd., Newton Highlands

Barbara A. Welch
102 Murdock St., Brighton

Nancy E. Roche
16 Marinello Terr., Albany, N. Y.

Mary A. Rowan
25 Pine Knoll Rd., Lexington

Jean M. Ryan
20 Webcower Rd., Arlington

Maureen P. Ryan
79 Highland St., Amesbury

Carol A. Sherman
24 Purvis St., Watertown

Mary M. Sherry
43 Glenwood Rd., Somerville



Making a grand entrance, Jean provides merriment for Eleanor, Bobby and Mary.

Freshman Directory



A proved recipe for leadership includes a dash of Anne Flaherty for Vice-President, a sprinkling of Betty Keane, Secretary, a sprig of Joyce Dunn, Treasurer, and to top it off with Marie Vasaturo, President.

Carolyn A. Ambrose
69 Westchester Rd., Jamaica Plain

Nancy M. Andrews
7 Loudon St., Worcester

Dorothy I. Arcidiacono
188 Lawrence St., Lawrence

Margaret M. Austin
49 Maple St., White River Jct., Vt.

Suzanne Barker
115 Fair Oaks Park, Needham

Frances T. Benson
10 Edgebrook Rd., West Roxbury

Carol A. Bonner
583 Weld St., West Roxbury

Anne Brault
5 Willow Pl., Cazenovia, N. Y.

Suzanne Brebbia
273 Chestnut Ave., Jamaica Plain

Margaret M. Burke
945 Centre St., Jamaica Plain

Rosemary H. Burns
48 Elm St., Leominster

Dorothy H. Calzone
99 South Main St., Milford



FRESHMAN DIRECTORY



Learning to *parlez-vous*, as part of their work, are Dot, Margie, Ann and Marie.

Mary R. Campbell
26 Circuit Ave., Newton Highlands

Patricia A. Cannon
58A Pillsbury St., Concord, N. H.

Nancy A. Caron
827 Beech St., Manchester, N. H.

Margaret M. Casey
28 Oakwood Ave., Lawrence

Patricia M. Casey
83 Washington St., Taunton

Virginia M. Clark
7 St. Paul St., Cambridge

Mary J. Coughlan
35 Cliff St., Abington

Virginia M. Crago
99 Lamoille Ave., Bradford

Ann M. Cronin
260 Burncoat St., Worcester

Barbara A. Cronin
38 Baker St., West Roxbury

Marilyn R. Curley
25 Chestnut St., Wakefield

Geneva A. Currivan
12 Campbell St., West Medway

Joan M. Cusick
29 Alaric St., West Roxbury

Carol M. Daly
2 Langley Road, Arlington

Mary C. Daly
33 Sparhawk St., Brighton

Anne E. Delay
102 Plain St., Rockland

Adrienne E. Dillon
111 Cabot St., Milton

Ellin A. Donoghue
571 V.F.W. Parkway, Chestnut Hill

Sally M. Donovan
46 Webster St., Rockland

Geraldine Dowd
59 Bay State Rd., Belmont

Anne T. Doyle
12 Beechcroft Rd., Newton

Maureen F. Duffy
72 Arlington St., Brighton

Joyce M. Dunn
Taylor Hill, Charlestown, N. H.

Marie J. Durilly
27 Morse St., Natick

Anna Mae Fedina
47 Huyshope Ave., Hartford, Conn.

Anna M. Fitzpatrick
44 Beauchamp Terr., Chicopee Falls

Anne C. Fitzpatrick
1774 Commonwealth Ave., Auburndale





FRESHMAN DIRECTORY

Ann M. Flaherty
28 Upton St., Quincy

Claire A. Flynn
243 Winter St., Norwood

Frances M. Foley
42 Charles St., Auburndale

Grace A. Foley
76 Louders Lane, Jamaica Plain

Ann M. Ford
9 Cedar Ave., Somerville

Marilyn A. Fox
28 Burroughs Rd., Braintree

Elizabeth A. Furze
22 Bellevue St., West Roxbury

Jane A. Gallogly
R.D. No. 1, Rensselaer, N. Y.

Dolores T. Gargaro
28 John A. Andrew St., Jamaica Plain

Mary R. Getzfread
100 Albermarle Rd., Newtonville

Marjorie E. Gorman
18 Willard St., Newton

Mary K. Gormley
372 Cornell St., Roslindale

Margaret P. Grant
699 East Fourth St., South Boston

Anne M. Greaney
20 Willis St., Dorchester

Gladys A. Guson
99 East Canton St., Boston

Joyce A. Haggerty
2 Russell Rd., Winchester

Margaret A. Hanron
17 Sidley Rd., West Roxbury

Dorothy A. Harrington
26 Hancock St., Somerville

Ann M. Healy
37 King St., Auburndale

Elinor M. Healy
432 Pleasant St., Belmont

Claire L. Henneberry
21 Littlefield Rd., Newton

Anne M. Henry
49 Norfolk Rd., Arlington

Jeann M. Herard
6 Church St., North Brookfield

Frances H. Heron
254 Summer St., Auburn, Me.

Joanne F. Hines
11 Blanche St., Dorchester

Pauline S. Howard
164 Main St., Franklin



Grandfather's clock, in the Foyer, intrigues Ann, Betty, Bea and Mary Alice.

FRESHMAN DIRECTORY

Carol A. Hughes
346 So. Manning Blvd., Albany, N. Y.

Ellen M. Hurley
9 Victoria Circle, Newton Centre

Elizabeth J. Keane
80 Algonquin Rd., Chestnut Hill

Nancy M. Keefe
152 Great Plain Ave., Needham

Mary R. Keelan
822 Washington St., Dedham

Mary T. Keenan
32 Patten St., Watertown

Mary L. Kelleher
28 Dutton St., Malden

Mary A. Kent
44 Snell St., Brockton

Jane A. Kiernan
196 Church St., West Roxbury

Constance A. Knowles
179 Robbins St., Milton

Mary P. Leary
480 Brook Rd., Milton

Shirley A. LeClair
28 Annapolis Rd., West Newton

Anne M. Ledden
59 College St., Montpelier, Vt.

Irene Lee
19 Alden St., Newton Centre

Barbara D. Leese
70 Beaconwood Rd., Newton Centre

Patricia A. Limerick
21 Southbourne Rd., Jamaica Plain

Ann W. Loftus
1846 Commonwealth Ave., Brighton

M. Eileen MacDonald
112 Central St., Somerville

Ann M. Madden
12 Vera St., Dorchester

Margaret M. Mannix
71 High St., Newburyport

Ann M. Marshall
43 Spring St., Pawtucket, R. I.

Constance A. Mathieu
15 Woodland Ave., Southbridge

Jeanne McAlice
170 Alvin St., Greenwood, R. I.

Mary A. McDonald
70 Brookfield Rd., Winthrop

Ann C. McGrady
87 Pine St., Waltham

Marie E. McLaughlin
117 East Washington St., Hanson



A past C.Y.O. victory is admired in the present by future trophy aspirants.

FRESHMAN DIRECTORY

Charlotte J. Meany
71 Cufflin St., Brighton

Martha E. Merrill
106 Cedric Rd., Newton Centre

Eleanor L. Meyers
10 Harvard Rd., Belmont

Jane P. Miller
11 Glendale Rd., Marblehead

Barbara M. Mitchell
8 Wall Court, Canton

Joanne M. Moloney
14 Arbutus Rd., Swampscott

Elaine B. Montella
41 Russett Rd., West Roxbury

Ann L. Moylan
11 Stonchenge Lane, Albany, N. Y.

Jane M. Muckian
51 Orchard St., West Lynn

Carole A. Murphy
53 Hawthorne Ave., Arlington

Helen P. Murphy
110 Cedar St., Framingham

Jane F. Murphy
20 Garden St., Milton

Janice A. Murphy
119 Allerton Rd., Milton

Maryjo C. Murphy
64 Prospect Park, West Brooklyn, N. Y.

Patricia W. Murphy
17 Circular Ave., Natick

Joan A. Neary
247 Bellevue St., Newton

Mary F. Neilan
33 Grant St., Milford

Eleanor P. Ney
57 Columbia Rd., Portland, Me.



Two Nancys and an Ann meet a well known Regis benefactor early in college life.

Jane L. Nyhan
23 Goodway Rd., Jamaica Plain

Celeste H. O'Connell
42 Howard St., Rockland

Anne M. O'Donnell
36 Morton St., Quincy

Jean K. O'Donoghue
33 Robbins Rd., Arlington

Marjorie F. O'Neill
32 Champney St., Groton

Kathleen A. O'Rourke
3 East Washington St., Rutland, Vt.

Beatrice M. Pattavina
241 Washington St., Quincy

Ellen Pearce
1815 Beacon St., Brookline

Dolores E. Pickett
640 East Main St., Meriden, Conn.



FRESHMAN DIRECTORY



Ann and Sue do the groundwork. Mary talks and Jane does the hopeful waiting.

Mary A. Powers
112 Mt. Pleasant Ave., Gloucester

Mary E. Queeney
49 Briarfield Rd., Milton

Celia M. Quirk
30 Whitfield St., Dorchester

Mary L. Rawson
15 Sheridan Drive, Milton

Jean M. Reynolds
52 Colberg Ave., Roslindale

Angela L. Ryan
184 Lawrence St., Haverhill

Marcia E. Ryan
67 Colonial Parkway, Manhasset, N. Y.

Margaret E. Ryan
55 Engrem Ave., Rutland, Vt.

Louise E. Sacco
25 Breed St., East Boston

Angelina M. Scopelliti
10 Arch St., Leominster

Carol A. Settana
33 Montvale St., Roslindale

Elizabeth A. Shelbourne
122 Candee Ave., Sayville, Long Island, N. Y.

Joan E. Shields
223 Franklin St., Cambridge

Patricia N. Sullivan
223 Parkview Ave., Lowell

Ruth E. Swan
785 Plymouth St., Abington

Lorraine C. Talamona
242 Hillside Ave., Arlington

Catherine L. Tiernan
25 Corey St., Everett

Virginia E. Timothy
Orchard Terrace, Framingham Centre

Ann F. Tracy
33 Concord Ave., Cambridge

Patricia Turner
43 Chester St., Arlington

Joan M. Vahey
547 Washington St., Newton

Marie A. Vasaturo
79 Spring St., Medfield

Mary A. Welch
7 Anchorage Drive, Milford, Conn.

Nancy A. White
334 Tappan St., Brookline

Patricia H. Wittick
123 Channing Rd., Watertown

Sister Dolores Blanchard
1575 Cambridge St., Cambridge

Sister Irene Harper
1575 Cambridge St., Cambridge



ACTIVITIES







Student Government . . . (first row) R. Seales, L. Keating, E. Gilmore, M. Hassan; (second row) M. Kennedy, L. Christie, C. Russell, V. Padovano, J. O'Sullivan, L. Heath, J. Lynch; (third row) M. Vasaturo, J. Ryan, P. Avery, M. Alvord, E. Barrett, M. Norton and Kay Higgins formulate college plans.



Sodality . . . (seated) Regina Boyle, Kay Birmingham, Eleanor Barrett, Mary Norton, Joan Cannon, Joan O'Reilly; (standing) Clare Delaney, Ann Ryan, Kay Powers, Anne Downey, Helen Scully and Pat Bellini look at an article on the Perpetual Rosary, as it functions as a work of the Regis Sodality of Our Lady.



Dramatic Club . . . The world's a stage to dramatists (first row) Kay Powers, Janet Dolloff, Gerry Martin; (second row) Rosemary Denmark, Carole Bocasky and Santa Vadala. A year of superb theatrical achievement passed over the boards and now the curtain falls to the applause of many audiences.



Glee Club . . . "Music hath charms" and the lilting harmony of vocalists, Fleurette Arpin, Kay Birmingham, Claudette Prevost and Edwina Burns, under the direction of Sheila Post, show why the Club charmed audiences everywhere. Concerts on the Common, in mid-Lent and at the Pops made '53 a tuneful year.



International Relations Club . . . Discussing their latest plans for a panel on current events, Marie Clogher, Constance Torrissi, Theresa Audette, Claudette Prevost and Cynthia Mullen busily work over news accounts and possible topics for debate.

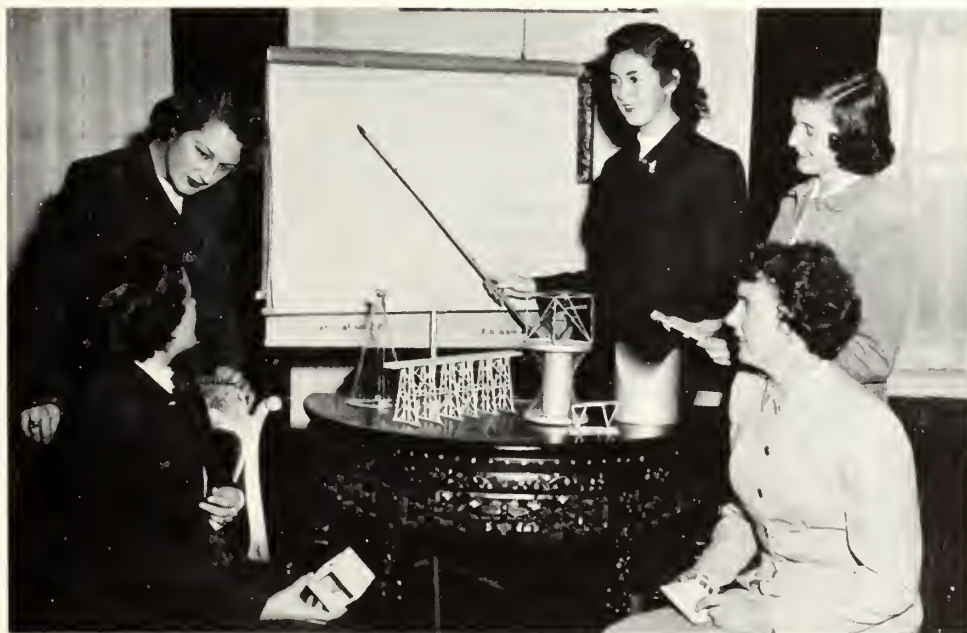


Mission Unit . . . Clare Delaney, centre, outlines her projects for the semester to (first row) Maureen Cremen, Janet Dolloff and Betty Devlin; (second row) Edwina Burns, Claire O'Connell and Theresa Audette, energetic workers for the busy activities to aid home and foreign missionaries.





Athletic Association . . . Pat Fallon, Janet Connolly, Betty O'Brien and Marianne Sanderson look forward with anticipation to the ski trip and Bermuda vacation, sponsored by the A.A., as well as field hockey, volley ball and basketball. A course for prospective elementary teachers is also offered by the Physical Education Department.



Mathematical Club . . . The intricacies of Math models intrigue Math majors Barbara Keenan, Dorothy Culpin, Barbara Galpin, Janet Connolly and Elaine Guinee. Barbara points to the symbols on the chart corresponding to the models, while discussing mathematical problems.





Ethelon Club . . . Ellen Synan, Connie Moe and Ann O'Brien stop for a moment with Claire O'Connell, President of the Club, to get her agenda for the coming months. As usual, the Ethelonians aim to carry out the task expressed in their name and their motto, "Willing to Serve."



Modern Language Club . . . Modern Languages hold a fascination for Fleurette Arpin, Patricia Cronin, Edwina Burns and Rose Terrasi, as together they scan the map for points of interest in countries which they hope to visit. Intermingling of French and Spanish motivates their meetings.



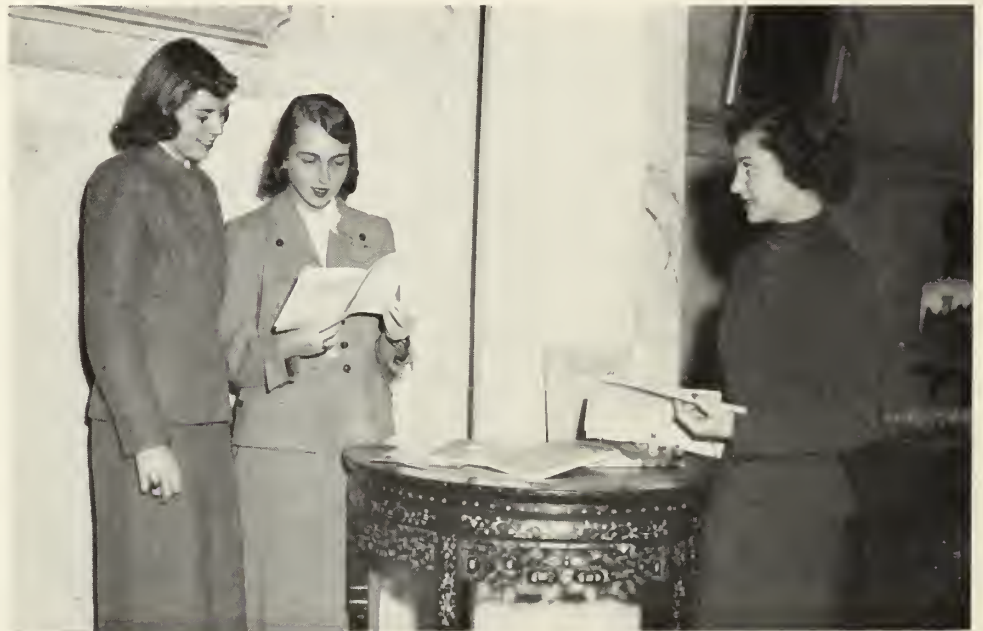
Louis Pasteur Club . . . Dorothy Johnson, Barbara DeMarco, Ann Graney, Joan Stephenson and Anne Downey examine the anatomy of a frog, at a recent science gathering. Joan Stephenson, President, conducts informative gatherings to enable members to appreciate scientific work.



Sigma Tau Phi . . . Classical Club followers have become adept in manipulating their marionettes. These classicists have presented puppet shows for the college. Shown practising the intricacies are Mary Doherty (seated), Bette Lou Mullins, Ann Cunningham, Mary Louise Kenney and Rita Kirby.



Business Club . . . Officers, Agnes Badrena, Virginia Kane and Mary Lynch confer with Father Harrington, Ethics Professor, on ethical principles for the modern business woman. The Business Club aims to combine the outstanding qualities of the Catholic with the efficient secretary.



Alpha Pi Epsilon . . . Admitted to Alpha Pi Epsilon, National Secretarial Honor Society for women, were Sheila Post, Janet White, Olive Pirani and also Patricia McNiff, not pictured. Standing for accuracy, dependability and efficiency, Alpha Pi Epsilon bases its membership on high scholarship.





Art Club . . . Springtime brings an artist's holiday, as nature paints the campus in vivid hues. Sister Mary Loretto, Connie Lucchini, Ann Gaffney and Marcelline Cassen, Art Club enthusiasts, express connoisseurs' satisfaction, as they perfect their canvases on the Parterre of College Hall.



St. Francis de Sales Club . . . Georgette Trudelle, Bette Lou Mullins, Juliette Brassard and Nancy Patch, executives in St. Francis de Sales Club, confer with President Janet Dolloff, on the program for the year. Increase in culture motivates the English majors' group.





Alpha Omicron Tau . . . Catherine McNamara, Eleanor Hughes, Paula Fitzsimmons, Mary Alice O'Brien, Jeanne Clifford and Ann Gaffney, Officers of Alpha Omicron Tau, carefully examine suitable material tentatively planning meetings for the coming semester. This is the Home Economics Club.



Kappa Omicron Phi . . . Members of Kappa Omicron Phi, Helen Murphy, Marcelline Cassen, Lenore Walton, Jeanne Clifford, Maureen Murphy, Jane Ryan and Barbara Dunbury gather for a picture. This is the National Home Economics Honor Society which aims to further the best interest of all Home Ec students.



Leo XIII Historical Society . . . History, past and present, holds the keen interest of (front row) Claudette Prevost, Vice-President, and Theresa Audette, President of the Leo XIII Society, as they confer on club plans with (back row) Patricia Thalheimer, Cornelia Murphy, Constance Torrisi and Rosalie L'Ecuyer, History concentrators.



Nu Beta . . . Fostering an enthusiasm for their major field, Psychology, are leaders in Nu Beta, Peggy Donnelly, President; Mary J. Kinne, Marcia McPherson and Ann Gallagher. The ranks of Nu Beta have been greatly enlarged with the addition of the new Child Psychology majors, who are anticipating teaching as a career.



Lambda Tau Phi . . . Aimed toward a stimulation of active student interest in the economic workings of the nation, Lambda Tau Phi starts its members on the way to greater understanding of present-day economic problems. President Doris Duncan, with aides, Ann Dugan and Mary Roche, are captured in a mood of formulating agenda.



Phi Upsilon Omicron . . . The Alpha Omicron Chapter of the National Home Ec Fraternity found Regis the first Catholic college to be admitted to PUO. Home economists in discussion are (seated) M. Alvord, C. Sanromá, President C. Lyons, B. Dalton, M. McCarthy, J. Boyd; (standing) D. Regan and G. Finn.

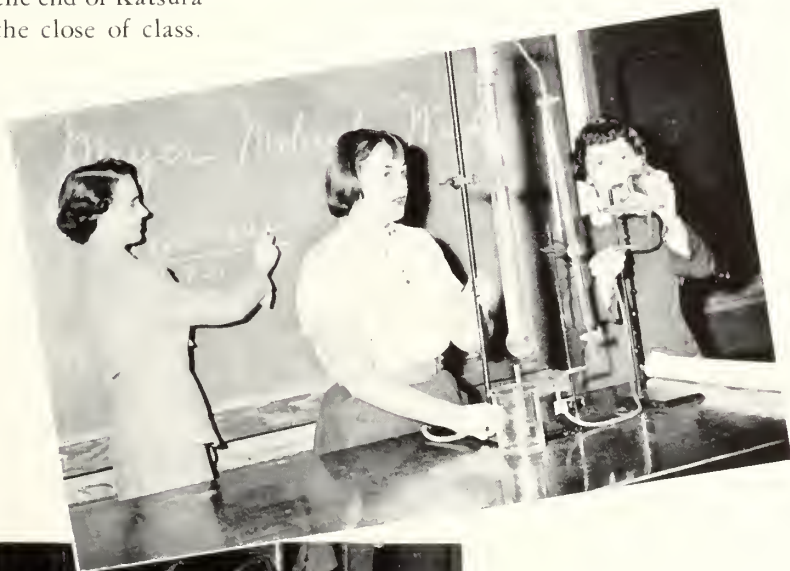


Seniors Snapped In Action



Rose, Barbara and Helen chat at the end of Katsura Drive, as they take a walk at the close of class.

J. Stephenson, P. Meara, E. Sullivan demonstrate molecular weight determination.



Carole Bocasky, Lorraine Cowan, Ann Grancy, Betty Uhlinger, Pat Cannon tell Miss Robinson of their Week End projects.





Regis College Alumnae

OFFICERS

Mrs. Eleanor Dever Denning
President

Mrs. Eve Casey Carey
Vice-President

Mrs. Marie Lanagan Bannon
Treasurer

Mrs. Ruth Rogers Lally
Secretary

Virginia J. Morrissey
Alumnae Secretary



Mrs. James E. Denning, President

The Alumnae Association, active in many Regis activities, sponsored a diversified program once again, this year. Mrs. James Denning of Cambridge held the office of President of the Association.

The initial event of the 1952-1953 season was the annual Fashion Show at The Meadows. In October, the traditional Harvest Hop, enjoyed each year by students and graduates alike, was held at the Hotel Statler. The Regis Chapel was the scene of two Holy Hours: one in October, the other, in May.

During the Christmas season, the Noël Ball was eagerly attended by students and alumnae. Starting the New Year, came

the traditional Retreat at the College.

In February, the Pre-Lenten Dance, now called the Ring Dance, was held in honor of the Junior Class, at the Sheraton Plaza, Boston.

A Buffet Supper at the Shelton Roof welcomed the Spring. June 1 featured Baby Day at Regis, with the children taking delight in ponies, clowns and candies.

The Regis Alumnae Association has worked untiringly to foster unity between graduates and students. Its zealous efforts for Alma Mater arouse undergraduate admiration and support. Congratulations are extended to this group for having completed another successful year.

Regis College Guild



Mrs. Patrick T. Hurley, President

Founded to further the interest in Regis financially, culturally and socially, the Regis College Guild, this year under the able direction of Mrs. Patrick T. Hurley, worked tirelessly toward its goal.

The Guild, a vital part of Regis, is composed primarily of mothers of Regis students and alumnae, as well as friends of Regis.

Throughout the year, the Guild sponsors varied and interesting activities. Every third Tuesday, a monthly meeting and tea was held at Regis Hall. For the first meeting in October, the Guild honored the mothers of Freshmen. Rt. Rev. Augustine F. Hickey, V.G., Spiritual

Director, was the initial guest speaker.

A rummage sale was held in October, followed in that same month by an Autumn luncheon at the Hotel Kenmore. In November, the activities were highlighted by the Foyer Bridge. At Christmas time, a sale and tea was held at the home of Mrs. John Burns.

The outstanding feature of the early Spring was the Communion Breakfast, with the Mass offered for the living and deceased members of the Guild. House parties were sponsored in various sections by Guild members.

To climax their year, the traditional Regis Night at Pops was held in May.

OFFICERS

Mrs. Patrick T. Hurley
President

Mrs. John J. Harrington
Vice-President

Mrs. William F. Bradford
Recording Secretary

Mrs. Joseph Gorman
Corresponding Secretary

Mrs. John F. Burns
Financial Secretary

Mrs. G. Frank MacDonald
Publicity Chairman

YEAR AT REGIS





Fall



Discussing Student Government plans are Vilma Padovano, Jeanne O'Sullivan, Claire Russell.

Edwina Burns, Fleurette Arpin, Claudette Prevost talk with Alceste Laurenti, opera star.



Schola Cantorum, comprised of selected voices, rehearses under Sheila Post's able hand.





Jane, in her famous raccoon, is perched on the wall waiting for the girlies.



Jeanne O'Sullivan rehearses her role in the Regis production, "Quality Street."

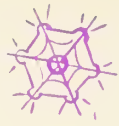


The Archbishop bestows caps and gowns upon Seniors.



Students leave as others enter the Business Building.





Winter



Louise and Ellie select wrappings at Christmastime in the College Bookstore.



Lorraine and Ed, suitemates, figure two are better than one at wrapping gifts.



The Business Building, banked in snow, awaits the daily deluge of Regisites, who spend several hours there.



Long may they reign: Sheila as stately Junior Prom Queen and the two Bettys as attendants.



Peter and Janet steal the hearts of everyone in the Christmas play, "The Present."

Snow completely blankets the Athletic Field and gives a tranquil scene.



Regis Hall in its winter setting is a delight for avid campus photographers.

Spring



Bishop MacKenzie poses with '52 Officers on Baccalaureate Sunday.



Twin smiles, two champions of truth, Archbishop and a Summa.

Tops in scholasticism reap harvest with His Excellency.





Junior, Freshman Presidents observe scholar's tree planting.



Academically robed Seniors march on Class Day, flanked by colorful splashes of the Daisy Chain.

Regis' fairest pays tribute to the Queen of Heaven, in May.

Junior Sodality Officers lead their classmates down the Parterre steps in the May Procession.



Athletics at Regis



Shuffle board techniques intrigue Elaine and Jeanne, getting in some practice.

Athletics play an important part both in the regular curriculum and in extra-curricular activities.

During Freshman and Sophomore years, a regular program is followed to initiate students in seasonal sports.

For all, there are field hockey and basketball teams, intercollegiate games and tennis courts. Field day in May rounds out this varied program. Faculty and students join for baseball and Seniors roll their hoops.



The winners, Pat, Dottie and Nancy pose with their winning hoops, following the annual Hoop Rolling Contest, held indoors on account of the rain.



Joanne Hynes beams after her vitality led her to win the Hoop Rolling race.



Joyful Regis archers get into position to practise their William Tell techniques: Janet Martin, Betty O'Brien, Dotty Fraser, Bette Lou Mullins and Connie Murphy.



The autumn season sparks Regisites onto the gym field for energetic workouts in field hockey.



Junior sports enthusiasts bound about in the gym during a challenging game of basketball.



Peppy members of the Sophomore Class engage in learning the technique of volley ball during gym period. Hours are spent trying to outwit one another in the game.



Excitement runs high, as basketball devotees reach in the air for the elusive ball.



Tennis, anyone? This maroon-clad Regisite smashes a dynamic ball with a backhand stroke.



Jeanne as seen in action up at North Conway, where she is found skiing almost every week end.



Jeanne Driscoll, '54, smiles happily, after being chosen first Snow Queen on the B. & M. train.



This group of students is getting practice in square dancing, as part of the athletic curriculum, which they will use later in teaching elementary school.



Mount Regis Staff



Anne Ponch, Jeane Ann O'Neil, Shirley Connors, Louise Morin, Janet Dolloff and Joan Carroll, Seniors on THE MOUNT REGIS, decide on which informal pictures will be used in the '53 edition of their yearbook.



Sheila Post, Business Manager of THE MOUNT REGIS, checks tickets for the yearbook dance.



THE MOUNT REGIS Editor, Joan Cannon, studies format and make-up of former yearbook editions.



Business staff of THE MOUNT REGIS holds an outdoor, yearbook meeting with Sheila Post.

Regis Herald Staff



Joan Cannon, Louise Morin, Jeane Ann O'Neil, Shirley Connors, Joan Carroll and Janet Dolloff, staff members of the bi-weekly newspaper, work feverishly checking proofs and pasting up a dummy to meet a deadline.



Virginia Clifford and Julia Tierney plan to secure *Regis Herald* advertisers.



The Editor, Anne Ponch, is snapped while dashing off an eleventh-hour scoop.

Hemetera Editors



Hemetera, Regis literary magazine, receives the individual attention of its Senior Editors. Louise Morin, Joan Cannon, Joan Carroll, Jeane Ann O'Neil and Anne Ponch give final approval on typescripts and exchanges.

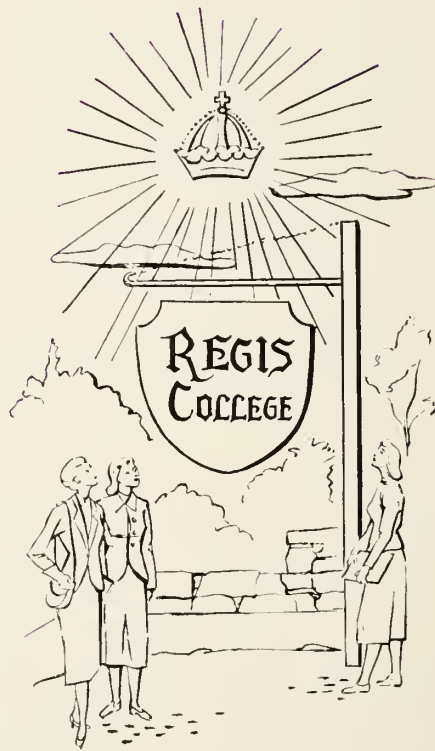


Marcie Cassen, Betty O'Brien, Gerry Finn, Vera Sullivan, Paula Haire are artists.



Copyreading final typescripts before press time is Shirley Connors, Editor.

COMMENCEMENT







From the North Wing, across the Parterre towards Regis Hall, the scenic splendor of the campus creates a beautiful view.

Baccalaureate Sunday

June 14, 1953

SOLEMN PONTIFICAL MASS

Cathedral of the Holy Cross

MOST REVEREND RICHARD J. CUSHING, D.D.

BACCALAUREATE SERMON

VERY REVEREND MATTHEW P. STAPLETON, D.D., S.S.L.

Class Day

June 15, 1953

Processional — Led by Class Marshal

Bestowal of Senior Banner Upon Freshman Class

Presentation of Cap and Gown to Junior Class

Address

Class History

Class Will

Class Prophecy

Class Ode

Tree Oration

Janet A. Sutherland

Mary F. Byrne

Jeanne T. O'Sullivan

Vilma M. Padovano

Janet G. Boyd

Edwina Burns

Joan A. Stephenson

Anne M. Ponch

Vilma M. Padovano

Class Song

The hours have flown
Since that September morn'
When we first met.
The years ahead seemed long.
We never dreamed they'd be so quickly gone.

The friends we've made
Are ever fond and true;
Their memory
Always a part of you;
The happy times to constantly renew
Within our hearts.

We've had our troubles and woes
As everyone knows,
But weathered the storms;
Sharing our smiles
And sharing our tears,
Together carried on.

Our hearts are joined
Unto eternity;
And stand as one
The Class of '53.
Through all the years
Our hearts will ever be
To Regis true.

JEANNE T. O'SULLIVAN, '53



Degree Day

June 16, 1953

Degrees are conferred on Seniors
by Archbishop Cushing.

Academic Procession

Presentation of Candidates for Degrees

Conferring of Degrees

Address to Graduates

Reverend George F. Sullivan, A.B.

Right Reverend Augustine F. Hickey, V.G.

Most Reverend Richard J. Cushing, D.D.

Dr. Patrick J. Sullivan, Director, Massachusetts Division of Elementary and Secondary Education and of State Teacher Colleges

Alma Mater

High on the hilltop in sunshine and shadow,
E'er tenderly guarding the lives 'neath your care;
Fostering goodness in hearts that are grateful,
Our dear Alma Mater, attend our fond prayer.
Hold all our mem'ries safe in your keeping,
And hallow our dreams of the future's bright hours.
Dear Alma Mater, we're watching and waiting;
We twine in our hearts for you undying flowers.

Peace like an angel wing hovers around us;
In sorrow and laughter its clear light we see;
Regis, our dear Alma Mater, we bless you
And faithful to you and your standards we'll be.
Hold all our mem'ries safe in your keeping,
And hallow our dreams of the future's bright hours.
Dear Alma Mater, we're watching and waiting;
We twine in our hearts for you undying flowers.



Epilogue

Today we close the door on a never-to-be-forgotten memory. Behind that door lie the traditions and ideals which belong to Regis and which now are securely locked within us. The seeds of truth and beauty nurtured in us over the last four years are ready to bloom. The ideals of the Way, the Truth and the Life are ripened now for us to digest as our own and then replant in others.

All the activities which signify Regis are far too numerous to print. Only a few can be mentioned here; but from these, many others will radiate when, in later life, we thumb these pages.

This week the culmination of life at Regis has been reached. With the celebration of each event, we experience for the last time one phase of our college life.

The Senior Prom reflects all that is gay and beautiful at Regis. The solemnity of Baccalaureate gives a last reminder that we are Daughters of the King. Class Day finds interminglings of joys and sorrows as our history passes in review.

Commencement has finally arrived; in academic robes, Seniors march in final tribute across the campus to receive at the Tower the final mark of their college education.



Their work almost complete, Anne Ponch, Sheila Post and Joan Cannon verify mailing lists.



Patrons

- MOST REVEREND RICHARD J. CUSHING
Boston
- RIGHT REVEREND ROBERT P. BARRY
West Somerville
- RIGHT REVEREND CHARLES N. CUNNINGHAM
Dorchester
- RIGHT REVEREND WILLIAM J. DALY
Brighton
- RIGHT REVEREND MICHAEL E. DOHERTY
Newton
- RIGHT REVEREND CHARLES A. DONAHUE
West Roxbury
- RIGHT REVEREND DANIEL J. DONOVAN
Milton
- RIGHT REVEREND CHARLES A. FINN
West Roxbury
- RIGHT REVEREND JOHN J. FLETCHER
Malden
- RIGHT REVEREND AUGUSTINE F. HICKEY
Cambridge
- RIGHT REVEREND ROBERT H. LORD
Wellesley
- RIGHT REVEREND JOSEPH F. MCGLINCHY
Lynn
- RIGHT REVEREND JEREMIAH F. MINIHAN
Norwood
- RIGHT REVEREND DENIS F. MURPHY
South Boston
- RIGHT REVEREND RICHARD J. QUINLAN
Winthrop
- RIGHT REVEREND JOSEPH A. ROBINSON
Brookline
- RIGHT REVEREND CORNELIUS T. H. SHERLOCK
Boston
- RIGHT REVEREND TIMOTHY P. SWEENEY
New Bedford
- VERY REVEREND FRANCIS J. LALLY
Revere
- REVEREND ANATOLE O. BAILLARGEON, O.M.I.
Natick
- REVEREND JOSEPH A. BRANDLEY
Dorchester
- REVEREND FRANCIS V. CUMMINGS
Belmont
- REVEREND EDWARD T. HARRINGTON
Weston
- REVEREND OTIS F. KELLY
Wellesley
- REVEREND DANIEL T. MCCOLGAN
Brighton
- REVEREND PETER J. McDONOUGH
Swampscott
- REVEREND STEPHEN F. MORAN
Quincy
- REVEREND GEORGE F. SULLIVAN
Newton Centre
- MR. AND MRS. JOHN L. AHEARN
Somerville
- MR. AND MRS. SALVATORE ARCIFA
Lawrence
- MR. AND MRS. O. O. ARPIN
Providence, R. I.
- MR. AND MRS. R. J. AUDETTE
Pawtucket, R. I.
- DR. AND MRS. JOHN RUSSELL BARKER
Needham
- MR. AND MRS. FRANCIS E. BARRETT
Milton
- MR. AND MRS. GEORGE A. BENWAY
Newton Centre
- MRS. LEO M. BIRMINGHAM
Brighton
- MR. AND MRS. JOSEPH BONANNO
Methuen
- MR. AND MRS. F. KEATS BOYD
Wellesley Hills
- MR. AND MRS. JOHN M. BOYLE
Brighton
- MR. AND MRS. JOHN F. BURNS
Chestnut Hill



MR. AND MRS. WILLIAM J. BYRNE
Brighton
MR. AND MRS. DENIS CAHILL
Cochituate
MR. AND MRS. P. J. CALLAHAN
Watertown
MR. AND MRS. THOMAS J. CAMPBELL
Chelmsford
MRS. THOMAS M. CANNON
Leominster
MR. AND MRS. CORNELIUS J. CARROLL
Watertown
MRS. E. J. CASSEN
West Yarmouth
DR. AND MRS. JOHN HENRY CAULEY
Dorchester
MR. AND MRS. J. D. CHAMBERLAND
Brunswick, Me.
MRS. MARY L. CHRISTIE
Jamaica Plain
MR. AND MRS. W. PAUL CLARK
Rockland
MR. AND MRS. EDMUND J. CLIFFORD
Quincy
MR. AND MRS. JAMES J. CLIFFORD
Watertown
MR. AND MRS. MICHAEL COLLETTA
Quincy
MR. AND MRS. JOSEPH W. CONNOLLY
Natick
MR. AND MRS. LEO V. CONNORS
Reading
MR. AND MRS. RONALD T. COWAN
Statesville, N. C.
MR. AND MRS. TIMOTHY F. CREMEN
Brockton
MR. AND MRS. JOSEPH J. CULPIN
Jamaica Plain
MR. AND MRS. EDWARD G. DALTON
West Roxbury
MR. AND MRS. LEONARD J. DELANEY
Brighton
MR. AND MRS. SALVATORE DE MARCO
Waltham
MR. AND MRS. JOHN J. DEVLIN
Brighton
MRS. FRANCES C. DOHERTY
Haverhill

MR. AND MRS. HERBERT E. DOLLOFF
Nashua, N. H.
MR. AND MRS. THOMAS J. DONNELLY, JR.
Lexington
MR. AND MRS. CLEMENT J. DORE
Auburndale
DR. AND MRS. EDWARD T. DOWNEY
Somerville
MR. AND MRS. DAVID I. DRISCOLL
Brighton
MR. AND MRS. C. E. DUNBURY
Winchester
MR. AND MRS. HENRY B. DUNCAN
Monrovia, Liberia
MR. AND MRS. FRANK J. FALVEY
West Newton
MRS. MARY C. FARINA
Newton
MR. AND MRS. HAROLD W. FARLEY
Brockton
MRS. MAGDALENE FERGUSON
Cambridge
MR. AND MRS. THOMAS J. FINN
West Roxbury
DR. TERESA R. FLAHERTY
Brighton
MR. AND MRS. FRANCIS L. FLANAGAN
Wellesley Hills
MR. AND MRS. F. B. FLORENCOURT
Arlington
MR. AND MRS. EDWARD J. GAFFNEY
Nahant
MR. AND MRS. ALLAN T. GALPIN
Arlington
MR. WARREN C. GUINEE
Arlington
DR. AND MRS. PAUL G. HAIRE
Malden



- MR. AND MRS. JOHN J. HALL
Cranston, R. I.
- MR. AND MRS. FRANCIS G. HASTINGS
Allston
- MRS. ARTHUR D. HEALEY
Somerville
- MRS. LESLIE J. HEATH
Somerville
- MR. AND MRS. FRANCIS J. HIGGINS
Needham
- MR. AND MRS. JOHN J. HOURIHAN
West Roxbury
- MR. AND MRS. J. LEE HUGHES
Swampscott
- MRS. PATRICK T. HURLEY
Belmont
- MR. AND MRS. JAMES P. HYLAND
Marlboro
- MRS. HESTER B. JOHNSON
Boston
- MR. AND MRS. FRANK T. KANE
Medford
- MR. AND MRS. WILLIAM J. KEEFE
Hingham
- MRS. FLORENCE E. KEENAN
Falmouth
- DR. AND MRS. PAUL T. KENDRICK
Milton
- MRS. BERTRAND C. KENNEY
Brockton
- MR. AND MRS. HERBERT H. KENNEY
Medford
- MR. MICHAEL J. KILFOYLE
Salem
- MR. AND MRS. GEORGE H. KIRBY
Auburndale
- MR. AND MRS. PHILIP KNOWLTON
New Haven, Conn.
- MRS. HENRY KOSTER
Hollis, N. Y.
- MR. ROBERT LIST
Wellesley Hills
- MRS. MARTHA M. LOUGHMAN
Dorchester
- MR. AND MRS. DANIEL J. LYNCH
Belmont
- MR. AND MRS. JOHN J. LYNCH
Melrose
- HON. WILLIAM G. LYNCH
Dorchester
- MRS. JOHN J. LYONS
Dorchester
- MISS ALICE M. MAGINNIS
Brookline
- MRS. EDWARD G. MALONE
Newton
- MR. AND MRS. JOHN J. MARTIN
Waltham
- MRS. ROBERT J. MARTIN
West Roxbury
- MR. AND MRS. WILLIAM F. MARTIN
Dorchester
- MISS KATHERINE McCABE
Brookline
- MR. AND MRS. WALTER McDONOUGH
Milton
- MR. AND MRS. OWEN MCGARRAHAN
Milton
- MR. AND MRS. JAMES P. McNAMARA
Brighton
- MR. AND MRS. PATRICK J. McNIFF
Belmont
- MR. AND MRS. WARREN A. McPHERSON
Jamaica Plain
- MR. AND MRS. JOHN E. MEARA
South Boston
- MR. AND MRS. ALBERT J. MEEGAN
Waltham
- MR. AND MRS. DEWEY MOLLOMO
Weston
- DR. AND MRS. EDWARD C. MORIN
Central Falls, R. I.
- MR. AND MRS. WILLIAM W. MULLEN
Milton
- MISS ELIZABETH MURPHY
Natick



MR. AND MRS. JAMES P. MURPHY
Belmont

MR. AND MRS. WILLIAM F. MURPHY
East Walpole

MR. AND MRS. GEORGE E. NORTON
Quincy

MR. AND MRS. GEORGE H. O'BRIEN
Belmont

MR. AND MRS. JOHN M. O'CONNELL
Boston

MR. AND MRS. JOHN J. O'CONNOR
Brighton

MRS. MARGARET G. O'DONNELL
Jamaica Plain

MR. AND MRS. JAMES E. O'NEIL
Chestnut Hill

MR. AND MRS. JOHN B. O'REILLY
South Natick

DR. AND MRS. JOSEPH L. O'REILLY
Lawrence

MR. AND MRS. JEREMIAH S. O'SULLIVAN
Woburn

MR. AND MRS. ANTHONY PADOVANO
Leominster

MR. AND MRS. JAMES B. PERAULT
Fitchburg

MR. AND MRS. WILLIAM G. PEAU
West Roxbury

MR. AND MRS. WILLIAM J. PIRANI
West Medford

MR. AND MRS. FRANCIS J. PONCH
Springfield

MRS. STEPHEN POST
Gloucester

MR. AND MRS. WALTER G. POWERS
Taunton

DR. AND MRS. G. E. PREVOST
Keene, N. H.

MR. AND MRS. JAMES REGAN
Newton

MR. JOHN M. RUSSELL
Watertown

MR. AND MRS. MARK J. RYAN
Manhasset, N. Y.

MR. AND MRS. HAROLD G. SHEERIN
Jamaica Plain

MR. AND MRS. FELIX J. SPUGNARDO
Rockport

MR. AND MRS. W. G. STEPHENSON
Needham

MR. AND MRS. WILLY ST. GERMAIN
Woonsocket, R. I.

MR. AND MRS. DANIEL F. SULLIVAN
Waban

MR. AND MRS. JOSEPH D. SULLIVAN
North Andover

MR. AND MRS. DONALD B. SUTHERLAND
Chestnut Hill

MR. AND MRS. RAYMOND TERRASI
Maynard

MR. AND MRS. JOHN F. TERRY
Hopkinton

MR. AND MRS. F. PATRICK TIERNEY
Warehouse Point, Conn.

MR. AND MRS. JOSEPH A. TORRISI
Methuen

MRS. GEORGE TRUDELLE
New Bedford

MR. AND MRS. ANDREW VADALA
Boston

MR. AND MRS. ROBERT P. VALLE
West Newton

MR. AND MRS. FRANK E. WALKER
Somerville

MR. AND MRS. JAMES C. WALTON
Weston

MR. AND MRS. WILLIAM H. WARD
Wellesley Hills

MR. AND MRS. CHARLES B. WHITE
West Roxbury

MR. AND MRS. FREDERICK A. WRIGHT
North Attleboro



REGIS
WORCESTER CHAPTER



WORCESTER

LAWRENCE
REGIS CLUB

STUDENT ASSOCIATION



Regis College

The MEADOWS

Route 9

FRAMINGHAM

Tel. 6124

MORGAN
LINEN SERVICE, Inc.



941 MASSACHUSETTS AVENUE

BOSTON

BLESSED VIRGIN
SODALITY



COLLEGE
BOOKSTORE

ATHLETIC
ASSOCIATION

NU BETA

REGIS HERALD
and
HEMETERA

HOME ACCESSORIES
COMPANY

ANDREW E. MURRAY

AWNINGS

WINDOW SHADES

SCREENS

20 NILES ST., BRIGHTON 35, MASS.

Natick
2974

STadium
2-6141

Framingham
3131

Barry Printing Co.

"Service That Satisfies"

MUSIC HALL AVENUE
WALTHAM

(Rear Waldorf Theatre)

ERNEST E. BARR FRANK TIPPING
Telephone Waltham 5-0070

FRANCIS J. DALY

SCHOOL SUPPLIES

and FURNITURE

Representing

J. L. Hammett Co.

Cambridge, Mass.

GERALD HENDERSON
HENRY W. KNEELAND
JOHN F. WATSON

KENNETH W. FAUNCE
WALDO M. HATCH
ANTHONY FAUNCE

JOHN C. PAIGE & COMPANY
INSURANCE

We are pleased to have the opportunity of serving the insurance needs
of the students at Regis College

40 BROAD STREET
BOSTON

New York - Portland - Los Angeles

FRANCIS D. DUGGAN

Lafayette 3-4579

Res. Woburn 2-1328

D. F. CAREY

PLUMBING, HEATING and GAS FITTING

Jobbing a Specialty

11A Hawkins St.
BOSTON

16 Munroe St
WOBURN

**Brookline Bag
& Paper Co.**

48 STATION STREET
BROOKLINE 46

**INTERNATIONAL
RELATIONS
CLUB**

MODERN LANGUAGE CLUB

MATHEMATICAL CLUB

SIGMA TAU PHI

ST. FRANCIS DE SALES CLUB

LOUIS PASTEUR CLUB

ART CLUB



WORCESTER ENGRAVING COMPANY
COMPLETE ART AND ENGRAVING FACILITIES

T. F. KENNEFICK & CO.

General Contractors



20 Bartlett Avenue
Arlington 74, Mass.

AR 5-4816

80 Boylston Street
Boston 16, Mass.

HU 2-1033

Mount Saint Joseph
Academy



BRIGHTON, MASSACHUSETTS

Class of 1956



Class of 1953



REGIS COLLEGE

A CATHOLIC INSTITUTION
FOR THE HIGHER EDUCATION *of* WOMEN



*Conducted by the Sisters of Saint Joseph
of the
Archdiocese of Boston*



Standard Courses Leading to the A.B. Degree
Affiliated with the Catholic University of Washington, D. C.
Accredited by the National Catholic Educational Association
Board of Regents of the University of the State of New York

Listed as Member of the following

*New England Association of Colleges and Secondary Schools
Association of American Colleges
American Council in Education
College Entrance Examination Board
National Commission on Accreditation
National Association of Deans of Women
American Association of Collegiate Registrars
American Library Association
American Home Economics Association
American Medical Association
National Secretarial Honorary Society*

WESTON - - MASSACHUSETTS

Class of 1955



Class of 1954



REGIS COLLEGE
GUILD



REGIS COLLEGE
ALUMNAE



WALNUT PARK

Country Day School for Boys

CONDUCTED BY
THE CONGREGATION OF THE SISTERS OF ST. JOSEPH



Newton • Massachusetts

Loren Murchison & Co., Inc.

333 Washington Street

Boston 8, Mass.

Jewelers
for the Official
College Ring



Represented by

FRANK A. FOWLER

FRANCIS A. MURPHY

Richmond 2-0161

Opposite Historic Old South Church

Bolton-Smart Company, Inc.



BEEF • PORK
LAMB • VEAL
POULTRY

*Quality
Foods*

FISH • BUTTER
CHEESE • EGGS
RELISHES



WILLIAM A. DOE, Pres.

WYMAN W. SMART, Treas.

WALTON C. CROCKER, Sec'y



19-25 South Market Street
Boston 9

Telephone LAfayette 3-1900
Connecting All Departments

ALFRED BROWN STUDIO

1306 BEACON STREET
BROOKLINE, MASSACHUSETTS



Official Photographer
to the
Class of 1953

The
GLENDALE COAL
and **OIL Co.**



47 MEDFORD STREET
CHARLESTOWN

Completely Electrified!



Electricity does all
the fatiguing work
. . . . Hand travel is
reduced to a mini-
mum . . . as many carbons as you need
can be made with no added effort on

the
UNDERWOOD ALL ELECTRIC
TYPEWRITER

**UNDERWOOD
CORPORATION**

211 Congress St.
Boston, Mass.

Hahn Drug Store, Inc.

CARL H. ALVORD, Reg. Pharmacist

*PRESCRIPTION
SPECIALISTS*



105 UNION STREET
NEWTON CENTRE, MASS.

Phone B1gelow 4-0760

Compliments of

ROY V. McCORMACK

Vice President and General Manager

WILLYS NEW ENGLAND, INC.

1045 COMMONWEALTH AVENUE

BOSTON 15, MASSACHUSETTS

UNION SAVINGS BANK

THREE OFFICES

216 Tremont St., Boston 16

69 Franklin St., Boston 10

683 Washington St., Norwood

SAVINGS ACCOUNTS

Single Name Trustee Joint Accounts

YOU MAY SAVE BY MAIL

See Us About Low-cost

SAVINGS BANK LIFE INSURANCE

WILLIAM B. CAROLAN, *President*

HOME MORTGAGES—4 1/2%

PERSONAL LOANS

AT LOW RATES

To Pay Bills or Send Money Use Our

“REGISTER CHECKS”

The Cost is only 10¢ per Check

WILLIAM E. MACKEY, *Treasurer*

Patrick J. Gill & Sons

Ecclesiastical Jewelers & Silversmiths



387 WASHINGTON ST.
BOSTON

MASS.

Compliments of



JOSEPH A. PINK

ESTABLISHED 1895

Pieron's

SEA GRILLS

7-8 PARK SQUARE 13-15 STUART STREET
HA 6-1100 HA 6-4215
601 WASHINGTON STREET
HA 6-8287
BOSTON, MASSACHUSETTS

*The
Name*



S. S. PIERCE CO.

on the label is your

Guarantee of Quality

J. H. McNAMARA, Inc.

READY MIX CONCRETE

WASHED SCREENED CRUSHED STONE

SAND, GRAVEL AND ROOFING GRAVEL

298 NORTH HARVARD STREET
ALLSTON 34, MASS.

Tel. STADIUM 2-3350

**Waterproof Paint
& Varnish Co.**

446 ARSENAL STREET
WATERTOWN

PHONE SOUTH BOSTON 8-0235
8-0236

Perry Fish Company

SEA FOOD

667 BROADWAY
SOUTH BOSTON, MASS.

Albany Carpet Cleaning Co.
CRIMES & HANRIGAN INCORPORATED
Rugg Road, Allston, Mass.
"New England's Largest and Finest"
STadium 2-4200

TELEPHONE EST. 1826
 WHOLESALERS: CAPITOL 7-7334-5-6
 RETAIL:
Nathan Robbins Company
Wholesale and Retail Purveyors of
POULTRY AND PROVISIONS
 29 North Market St. - Boston, Mass.
HUGH SCANNELL **D. W. SHEAN**
President *Treasurer*

J. L. Sullivan Co.
Wholesale
Confectioner
 1987 DORCHESTER AVENUE
 DORCHESTER, MASS.

Walter M. Stankard, D. M. D.
 680 MAIN STREET
 WALTHAM, MASSACHUSETTS

U-LIKE
Cone Corporation
 MELROSE

THOMAS F. KINNEALEY
& COMPANY
 Basement 2 - Faneuil Hall Market
 BOSTON, MASS.

Bigelow 4-3900
Home Specialties Co.
 INC.
 335 Worcester Turnpike
 Newton Centre 35
JOHN M. WALKER
President and Treasurer

Neil B. Doherty Co.
 CONVENT SUPPLIES
 POSTULANT OUTFITS
 GIFTS FOR NUNS
 48 Summer Street, Boston 10, Mass.
 3d Floor - HA 6-1614

Boston Statuary Corp.

251 Third Street
Cambridge 12, Mass.

BERMUDA
EUROPE
SOUTH AMERICA
HONOLULU
AFRICA
AUSTRALIA

TRAVEL NOW!

Brodline Travel Service

73 Tremont St., Boston
LAF 3-3055

Tel. LIBERTY 2-8656

JAMES HOOK & CO.

Lobsters - Shellfish



15-17 NORTHERN AVE.
BOSTON 10, MASS.

Owen J. McGarrahan Co.

16 Pelham Street
Cambridge 42



Field Engineers

Grid System

Sheraton Plaza Hotel

*Where the Regis Alumnae are
Always Welcome*

LLOYD CARSWELL
General Manager

BARRIE COMPANY

Engraved Stationery



BUFFALO - - - NEW YORK

H. F. Staples & Co., Inc.

3163 Mystic Valley Parkway

MEDFORD

LEO M. BIRMINGHAM
MEMORIAL FUNERAL HOME

KATHLEEN A. BIRMINGHAM, *Director*



471 WASHINGTON STREET

BRIGHTON 35, MASS.

Res. Tel. TR-6-0737

Tel. LA-3-6884

A. J. Mercier & Son

PAINTING and DECORATING

CHURCHES - SCHOOLS - RESIDENCES
OFFICE BUILDINGS

LAWRENCE J. MERCIER

11A HAWKINS ST.
BOSTON 14

E. T. Ryan Iron Works, Inc.

ALLSTON, MASS.

9-25 Braintree St.

Tel. STadium 2-3418

DESIGNERS and MANUFACTURERS

Stairs Railings Balconies
Window Grilles Bank Grilles Fences
Weather Vanes Gates

ALUMINUM AND BRONZE WORK

RIGGS *Flower* SHOP

2098 COMMONWEALTH AVE.

AUBURNDALE 66

JAMES B. RIGGS

ALGONQUIN 4-7433

**GERARD'S
*Caterers***

232 MARKET STREET
JOHN F. MELIA BRIGHTON 35, MASS.



*Quality Furniture
at
Low Prices*

OPEN EVENINGS TILL 9 P. M.

Steffens
'Furniture of Character'

191 WEBSTER STREET • WEST NEWTON • LAsell 7-1912

C. PAPPAS CO., Inc.

540 E STREET
BOSTON 10

Purveyor to Regis

J. J. MARTIN, INC.

1826 CENTRE ST. WEST ROXBURY
PArkway 7-0180

STORAGE *MOVING*
Our Own Warehouse *Local and Long Distance*

Expert Packers of China and Antiques
AGENT - ALLIED VAN LINES, INC.

GLEE CLUB

DRAMATIC CLUB
and
ALPHA PI EPSILON

FRAMINGHAM
REGIS CLUB



A FRIEND



McDONOUGH MOTORS, Inc.

AUTHORIZED

Dodge • Plymouth

AGENCY



708 Columbia Road DORCHESTER

W. McDONOUGH, *Pres.*

AV 2-6343

D. H. LEAHY

J. F. LEAHY

THE BOSTON TEXTILE CO.

Importers and Wholesalers of Dry Goods

CONVENT and HOSPITAL SUPPLIES

Church Linens - Laces - Habit Goods - Veiling
Household Linens - - - Club Plan Merchandise

93 SUMMER STREET - Tel. LI 2-8630 - BOSTON 10, MASS.

CAPITOL 7-5410

S. M. LEVIN COMPANY

Incorporated

BUSINESS EQUIPMENT DEPT.

Complete Office Furniture

*Typewriters and Adding Machines

INSTITUTIONAL DIVISION

Kitchen Equipment—Utensils, China, etc.

82-84 Washington St. - Boston, Mass.

*Favorable Rental Rates—Adequate Assortment
at Your Disposal

TAYTERS, Inc.

POTATO CHIPS



BOYLSTON Typewriter Service

Little Building - 80 Boylston St.
Boston, Massachusetts
HU 2-3564

Complete Sales Service Rental

DAIRY PRODUCTS

CONTAIN NEARLY ALL
THE ELEMENTS TO
NOURISH AND MAINTAIN
GOOD HEALTH

H. P. HOOD & SONS
MILK - ICE CREAM

M. B. FOSTER ELECTRIC CO.

368 CONGRESS STREET

BOSTON, MASS.



A Book To Be Treasured . . .

This annual is a permanent record, in picture and prose, of the academic year 1952-1953 at Regis College. Its value will increase as the years pass, and the quality of the printing will contribute in great measure to its lasting worth.

The Andover Press, Ltd., takes pride in its well-known craftsmanship which, combined with the long hours of careful planning and painstaking editorial work by the MOUNT REGIS Staff, makes this a book to be treasured.

The ANDOVER PRESS, *Ltd.*

ANDOVER, MASSACHUSETTS

Index

- Administration, 18, 19, 20, 21
Advertisements, 170-198
Alumnae Association, 142
Archbishop Cushing, 20, 126, 147, 150, 164
Athletics, 152-155
Baccalaureate Sunday, 150, 162
Campus Views
 Business Building, 106, 148
 Cafeteria, 24
 Cardinal O'Connell Hall, 16, 22, 23, 30, 109, 141
 Chapels
 College Hall, 102
 St. Joseph Hall, 12
 Classrooms, 28, 29, 30, 31, 106, 123
 College Hall, 3, 7, 8, 9, 15, 17, 19, 33, 106
 Grotto, 4, 11
 Mail Room, 25
 Parterre, 7, 15, 17, 19, 30, 31, 33, 162
 Reception Rooms, 104, 106, 107, 110, 112, 114, 116, 126
 Regis Hall, 10, 13, 102, 104, 106, 107, 129, 149
 St. Joseph Hall, 12
 Store, 148
 Tower, 4, 11
Class Day, 151, 163
Clubs
 Alpha Omicron Tau, 138
 Alpha Pi Epsilon, 136
 Art, 137
 Athletic Association, 133
 Business, 136
 Dramatic, 131
 Ethelon, 134
 Glee, 131, 146
 International Relations, 132
 Kappa Omicron Phi, 138
 Lambda Tau Phi, 140
 Leo XIII Historical Society, 139
 Louis Pasteur, 135
 Mathematical, 133
 Mission Unit, 132
 Modern Language, 134
 Nu Bera, 139
 Phi Upsilon Omicron, 140
 St. Francis de Sales, 137
 Sigma Tau Phi, 135
 Sodality, 130, 151
 Student Government, 130, 146
Contents, 6, 7
Dedication, 8, 9
Degree Day, 150, 164
Epilogue, 165
Executive Officers, 21
Faculty
 Formal Pictures, 26, 27
 Informal Pictures, 28-31
 Lists, 22-25
Foreword, 4, 5
Founders' Day, 147
Freshmen
 Directory, 122-127
 Informal Pictures, 123-127
 Officers, 122
Guild, 143
Index, 199, 200
Journalism, 156-159
Juniors
 Directory, 110-115
 Informal Pictures, 111-115
 Officers, 110
Laboratories, 22, 23, 141
Library, 104, 105
May Procession, 151
Motif, 1
Patrons, 166-169
Plays, 107, 147, 149
Priests, 26, 27
Publications
 Hemetera, 159
 MOUNT REGIS, 156, 157, 165
 Regis Herald, 158
Seal
 College, 6
 Sisters of St. Joseph, 5
Seniors, 34-102
 Ahearn, Mary Lou, 34
 Arcifa, Ann M., 34
 Arpin, Fleurette T., 35
 Audette, Theresa M., 35
 Barker, Kate J., 36
 Barrett, Eleanor M., 36
 Benway, Patricia M., 37
 Birmingham, Kathleen M., 37
 Bonanno, Catherine M., 38
 Boyd, Janet G., 38
 Boyle, Regina M., 39
 Burns, Edwina, 39
 Byrne, Mary F., 40
 Cahill, Mary A., 40
 Callahan, Joan T., 41
 Campbell, Ann M., 41
 Cannon, Joan M., 42
 Carroll, Joan M., 42
 Cassen, Marcelline A., 43
 Cauley, Kathryn M., 43
 Chamberland, Rita F., 44
 Christie, Laurie M., 44
 Clark, Joan C., 45
 Clifford, Jeanne M., 45
 Clifford, Virginia M., 46
 Colletta, Luciann, 46
 Connolly, Janet T., 47
 Connors, Shirley M., 47
 Cowan, M. Lorraine, 48
 Cremen, Maureen F., 48
 Culpin, Dorothy C., 49

- Dalton, Barbara A., 49
 Delaney, Clare E., 50
 DeMarco, Barbara A., 50
 Devlin, Elizabeth A., 51
 Doherty, Mary E., 51
 Dolloff, Janet H., 52
 Donnelly, Margaret A., 52
 Dore, Jane F., 53
 Downey, Eleanor J., 53
 Driscoll, Mary R., 54
 Dunbury, Barbara A., 54
 Duncan, Doris D., 55
 Falvey, Mary Ann, 55
 Farina, Sylvia M., 56
 Farley, Mary E., 56
 Ferguson, Barbara E., 57
 Finn, Geraldine L., 57
 Flanagan, Patricia A., 58
 Florencourt, Frances B., 58
 Gaffney, Ann K., 59
 Galpin, Barbara A., 59
 Guinee, Elaine M., 60
 Haire, Paula C., 60
 Hall, Marilyn C., 61
 Hastings, Jeannine C., 61
 Healey, Elaine T., 62
 Heath, Leslie J., 62
 Higgins, Katherine F., 63
 Hourihan, Jeanne M., 63
 Hughes, Eleanor V., 64
 Hyland, Mary J., 64
 Johnson, Dorothy H., 65
 Kane, Virginia M., 65
 Keefe, Anne M., 66
 Keenan, Barbara O., 66
 Kendrick, Audrey M., 67
 Kenney, Mary-Louise, 67
 Kilfoyle, Mary L., 68
 Kirby, Rita M., 68
 Knowlton, Elizabeth C., 69
 Koster, Eileen M., 69
 Loughman, Margaret M., 70
 Lynch, Barbara M., 70
 Lynch, Elizabeth A., 71
 Lynch, Jane P., 71
 Lynch, Mary E., 72
 Lyons, Christine M., 72
 Malone, Mary H., 73
 Martin, Geraldine A., 73
 Martin, Janet A., 74
 Martin, Mary E., 74
 McDonough, Eileen P., 75
 McDonough, Roberta F., 75
 McGarrahan, Emily M., 76
 McNamara, Catherine F., 76
 McNiff, Patricia A., 77
 McPherson, Marcia E., 77
 Meara, Patricia A., 78
 Meegan, Jean G., 78
 Mollomo, Corinne J., 79
 Morin, Louise E., 79
 Mullen, Cynthia, 80
 Murphy, Helen L., 80
 Murphy, Maureen E., 81
 Norton, Mary F., 81
 O'Brien, Elizabeth J., 82
 O'Connell, Claire C., 82
 O'Connor, Mary J., 83
 O'Donnell, Patricia M., 83
 O'Neil, Jeane Ann, 84
 O'Reilly, Joan C., 84
 O'Reilly, Marjorie R., 85
 O'Sullivan, Jeanne T., 85
 Padovano, Vilma M., 86
 Perault, Judith A., 86
 Pfau, Kathryn N., 87
 Pirani, Olive A., 87
 Ponch, Anne M., 88
 Post, Sheila S., 88
 Powers, Catherine J., 89
 Prevost, Claudette E., 89
 Quinn, Joan M., 90
 Regan, Dorothy T., 90
 Russell, Claire H., 91
 Ryan, Jane F., 91
 Sheerin, Constance M., 92
 Spugnardo, M. Felice, 92
 Stephenson, Joan A., 93
 St. Germain, Denyse Y., 93
 Sullivan, E. Jean, 94
 Sullivan, Vera A., 94
 Sutherland, Janet A., 95
 Terrasi, Rose M., 95
 Terry, Irene H., 96
 Tierney, Julia R., 96
 Torrisi, Constance M., 97
 Trudelle, Georgette E., 97
 Vadala, Santa M., 98
 Valle, Helen M., 98
 Walker, Ann M., 99
 Walton, Lenore K., 99
 Ward, Anne M., 100
 White, Janet M., 100
 Wood, Marjorie M., 101
 Wright, Lorraine M., 101
 Sister Mary Loretto, 103
 Sister Mary Roberta, 103
 Informals, 22, 25, 29-31, 103-107, 141,
 145, 161, 165
 Socials, 103, 104, 105, 146
 Sophomores
 Directory, 116-121
 Informal Pictures, 117-121
 Officers, 116
 Sports, 152-155
 Title Page, 2, 3
 Traditions, 146-151
 Tree Oration, 151
 Year at Regis
 Fall, 146, 147
 Spring, 150, 151
 Winter, 148, 149

